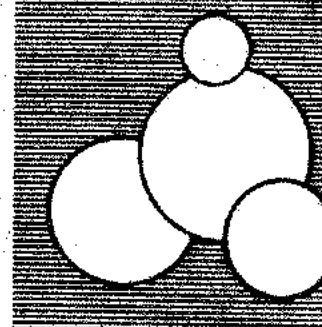


PANEL "LBB"
SERVICE: 120/208V-3Ø-W
9A 17210 KVA
9B 16230 KVA
9C 16230 KVA
MAIN BUS SIZE 225 AMPS

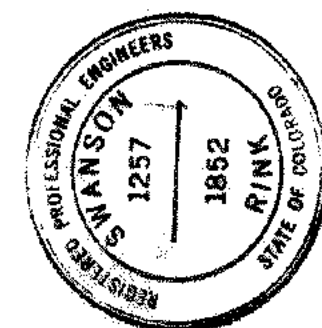
PANEL "LBD"
SERVICE: 120/208V-3Ø-W
9A 8020 KVA
9B 3340 KVA
9C 3340 KVA
MAIN BUS SIZE 100 AMPS

PANEL "PPA"
SERVICE: 277/480V-3Ø-3W
9A 168833 KVA
9B 168833 KVA
9C 168833 KVA
MAIN BUS SIZE 400 AMPS

PANEL "PPB"
SERVICE: 120/208V-3Ø-3W
9A 26591 KVA
9B 26591 KVA
9C 26591 KVA
MAIN BUS SIZE 100 AMPS



CARLISLE B. GUY ARCHITECT
COLORADO SPRINGS, COLORADO



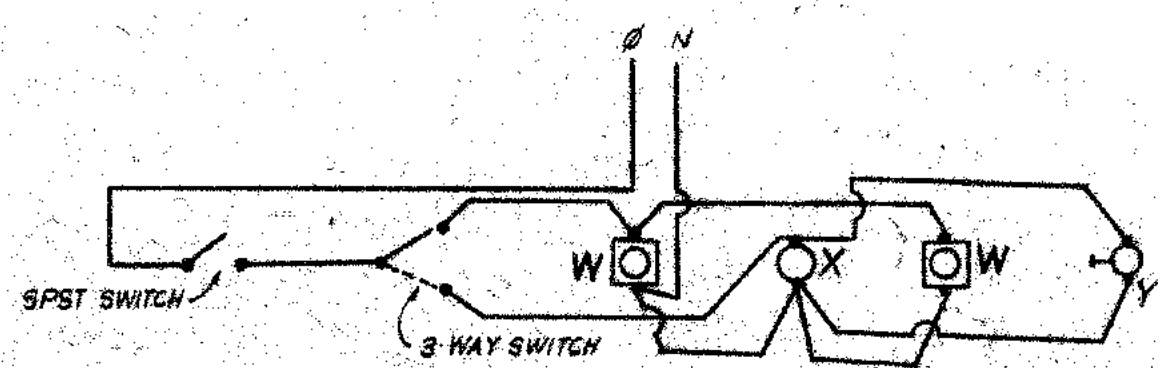
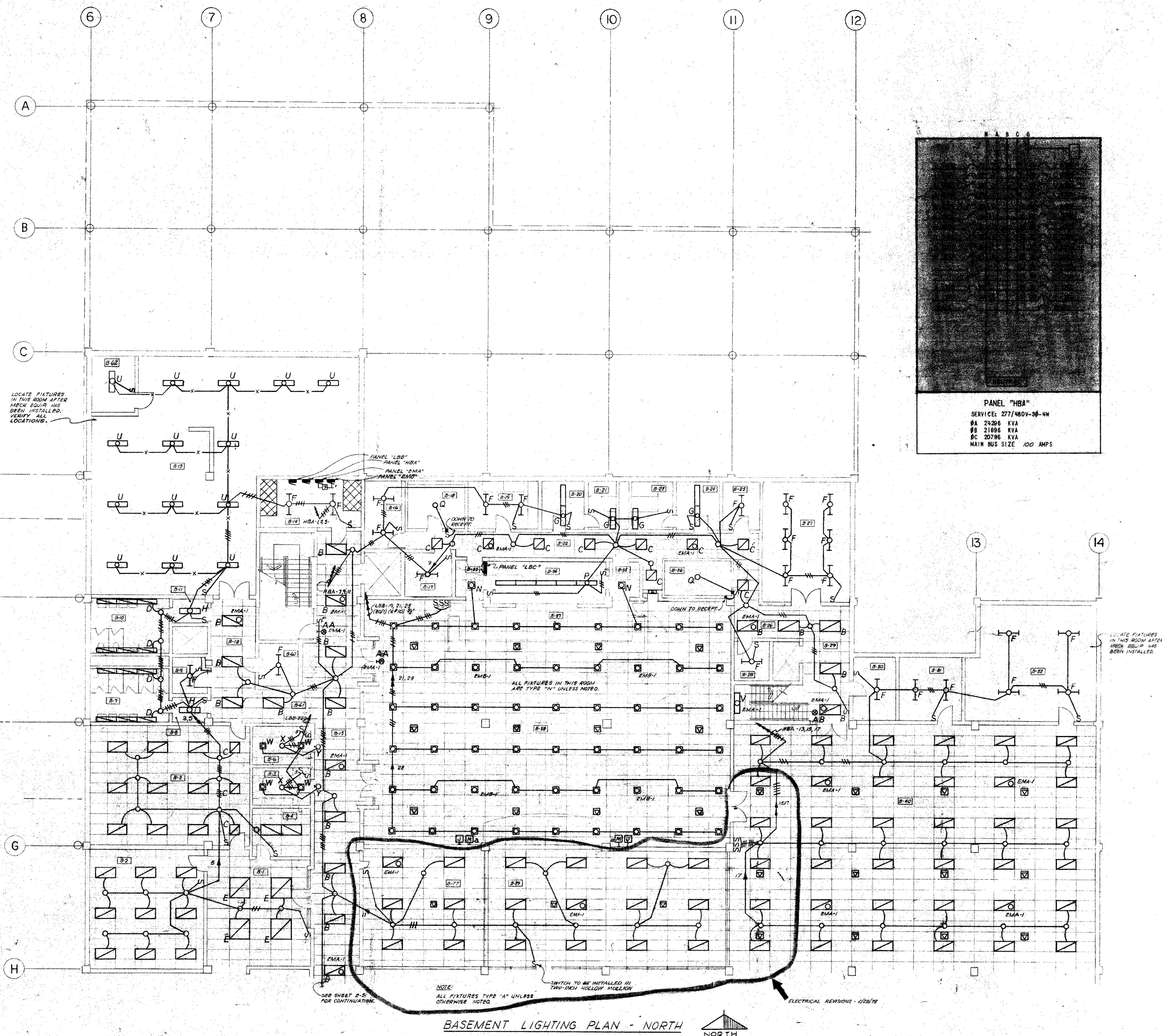
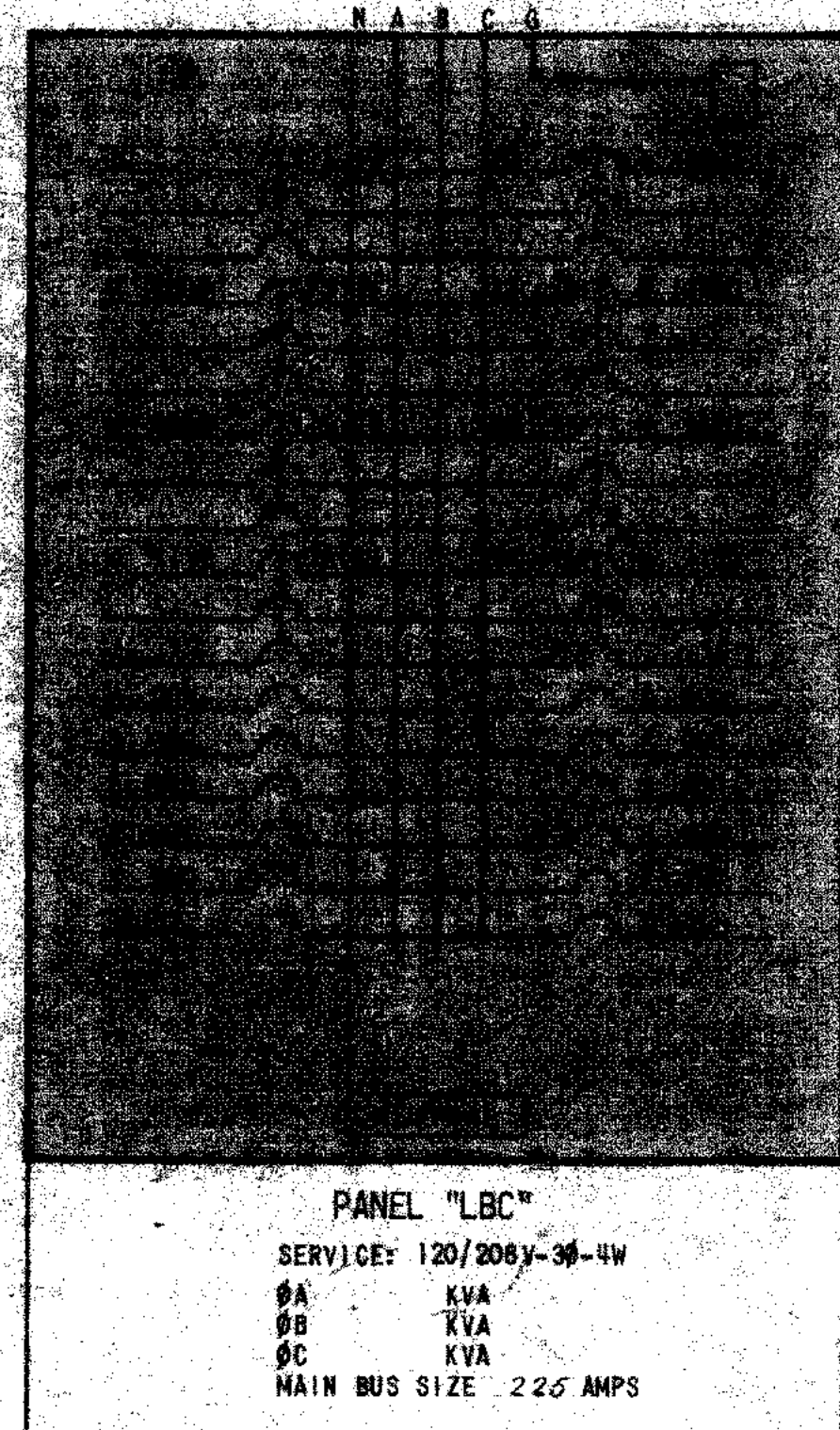
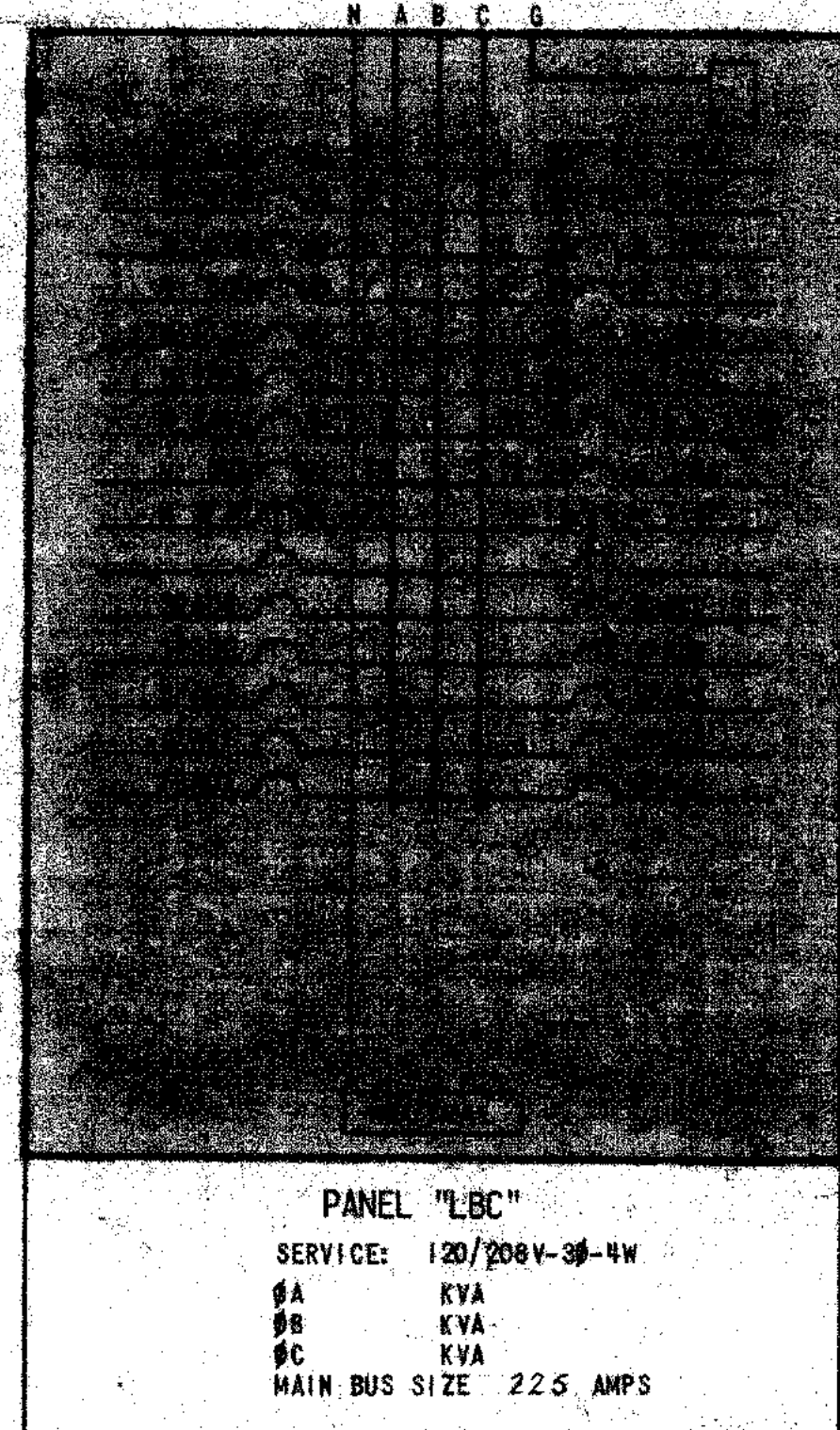
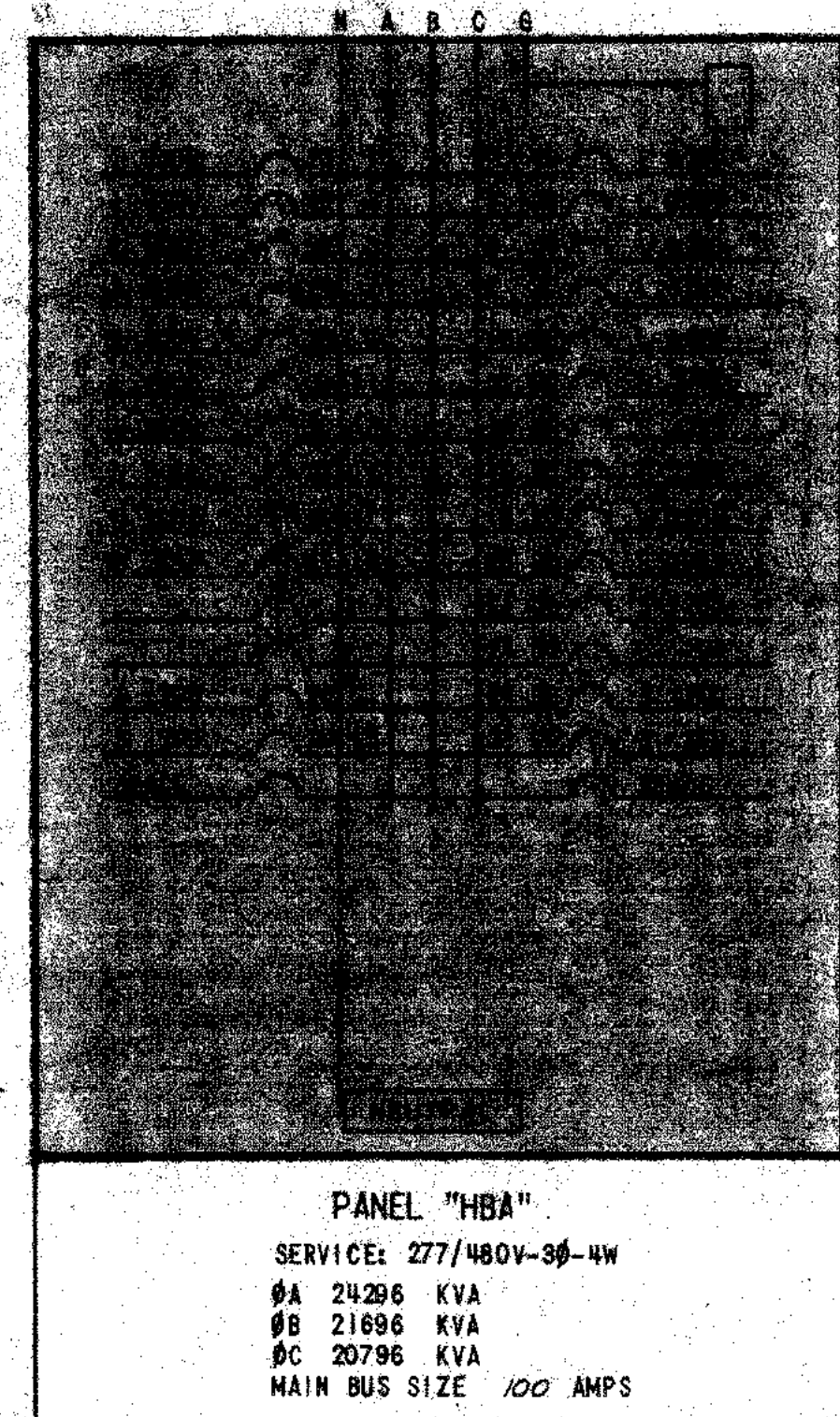
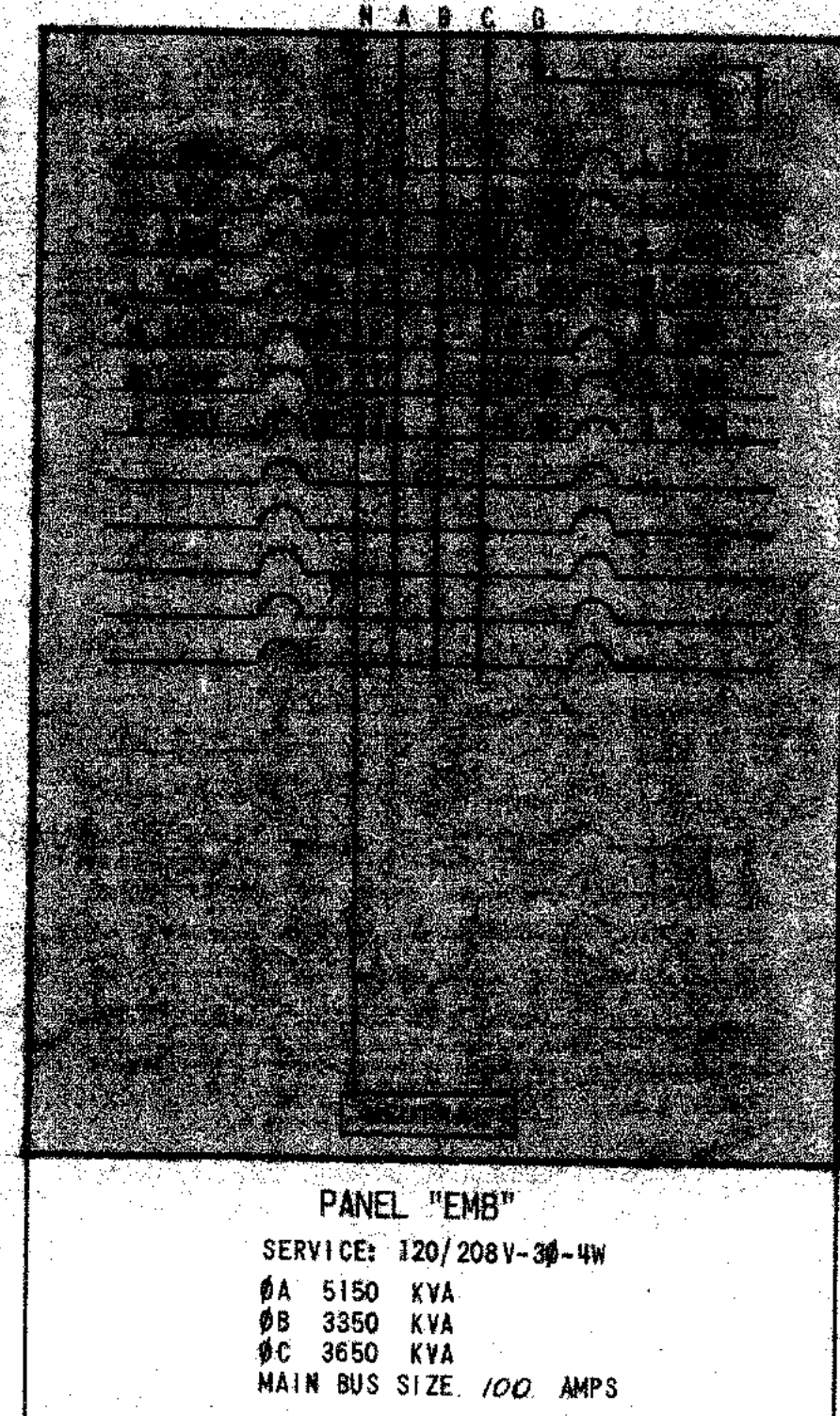
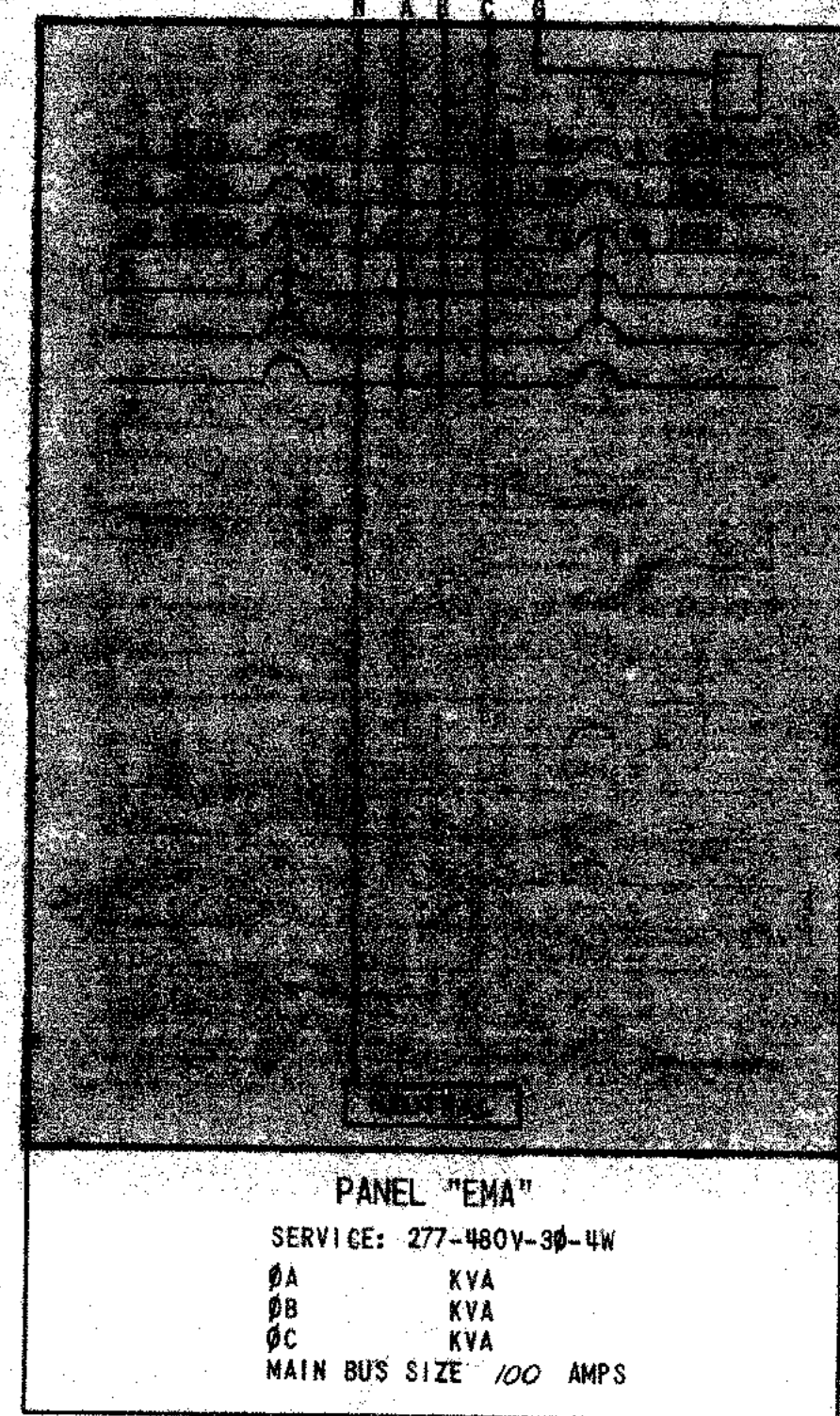
BASEMENT POWER PLAN - NORTH

S.C.S.G. COLLEGE CENTER
SOUTHERN COLORADO STATE COLLEGE
FLEETO, COLORADO

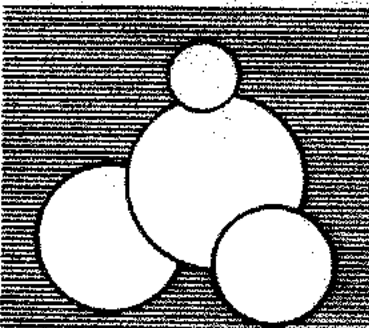
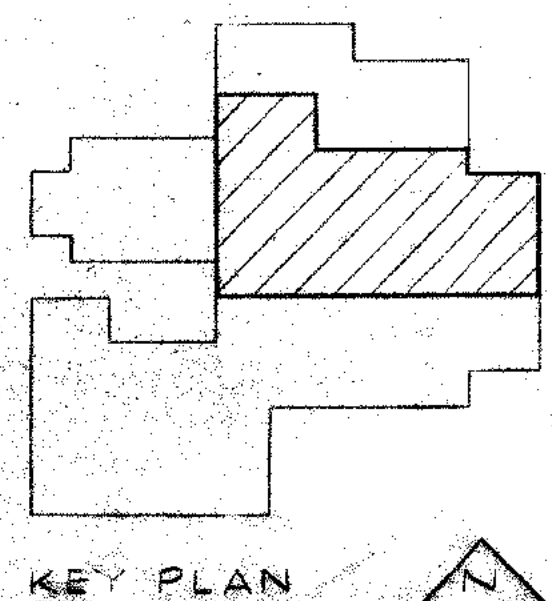
STATE PROJECT NO. 165

DRAWN BY SJM
CHECKED BY PLW
DATE: 06/28/88

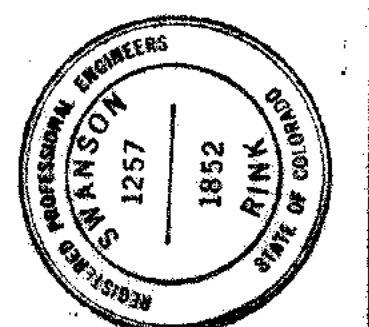
SHEET 13



DARK ROOM SWITCHING DIAGRAM

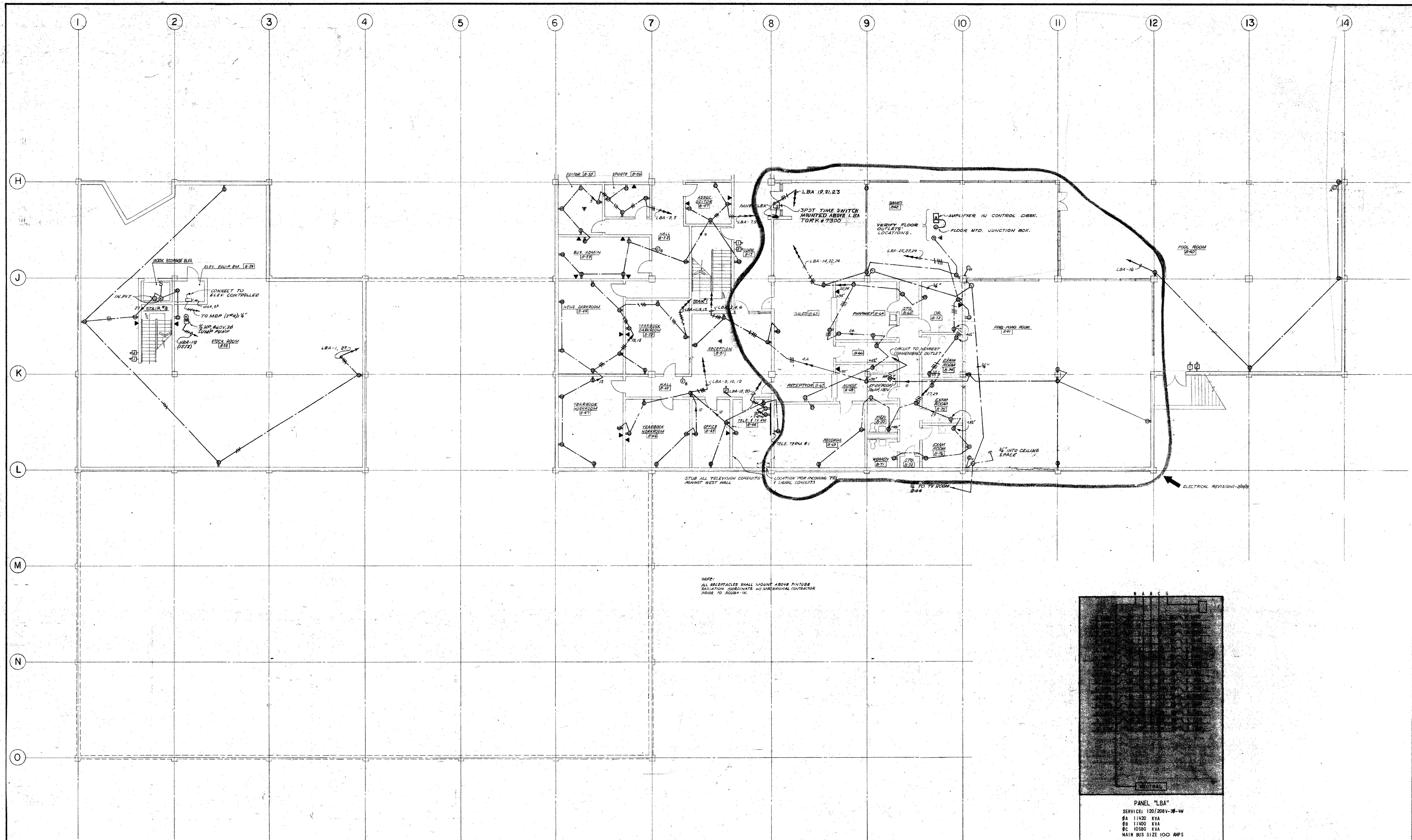


CARLISLE B. GUY ARCHITECT
COLORADO SPRINGS, COLORADO

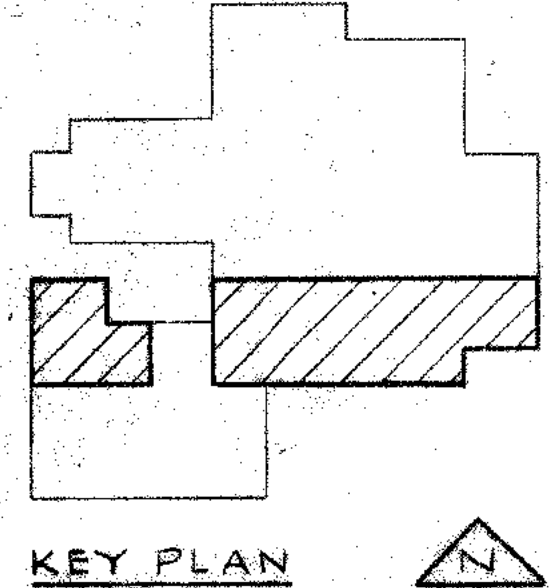
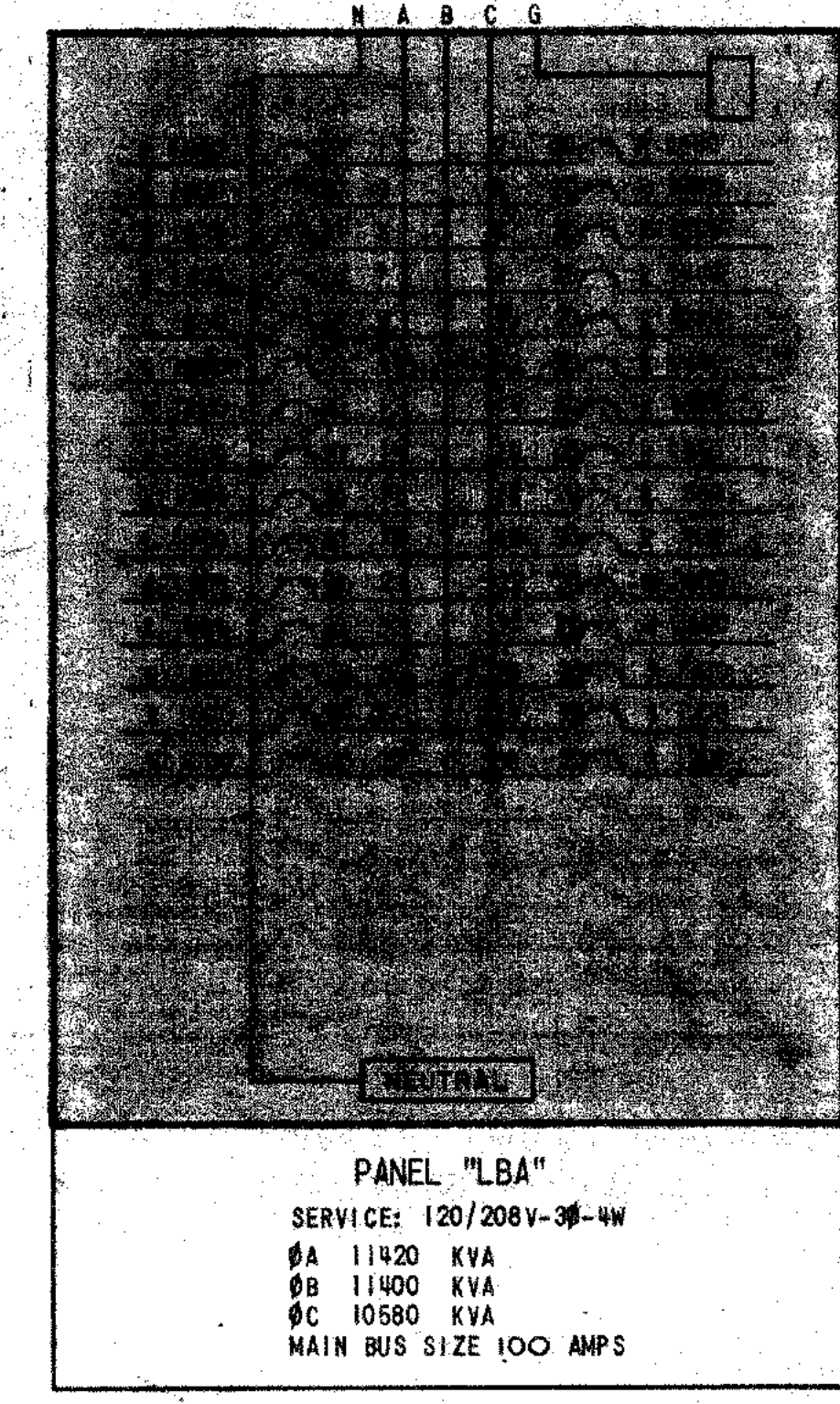


SSC, GALELIE CENTER
SOUTHERN COLORADO STATE COLLEGE
FLEETO, COLORADO
STATE PROJECT NO. 1015
BASEMENT LIGHTING PLAN - NORTH

DRAWN BY SJM
CHECKED BY RLV
DATE: 02/28/78
SHEET 133



BASEMENT POWER PLAN - SOUTH
SCALE: 1/8" = 1'-0"



CARLISLE B. GUY ARCHITECT
COLORADO SPRINGS, COLORADO

S.G.S.C. COLLEGE CENTER
SOUTHERN COLORADO STATE COLLEGE
FIBERO, COLORADO

STATE PROJECT NO. 1045
BASEMENT POWER PLAN - SOUTH

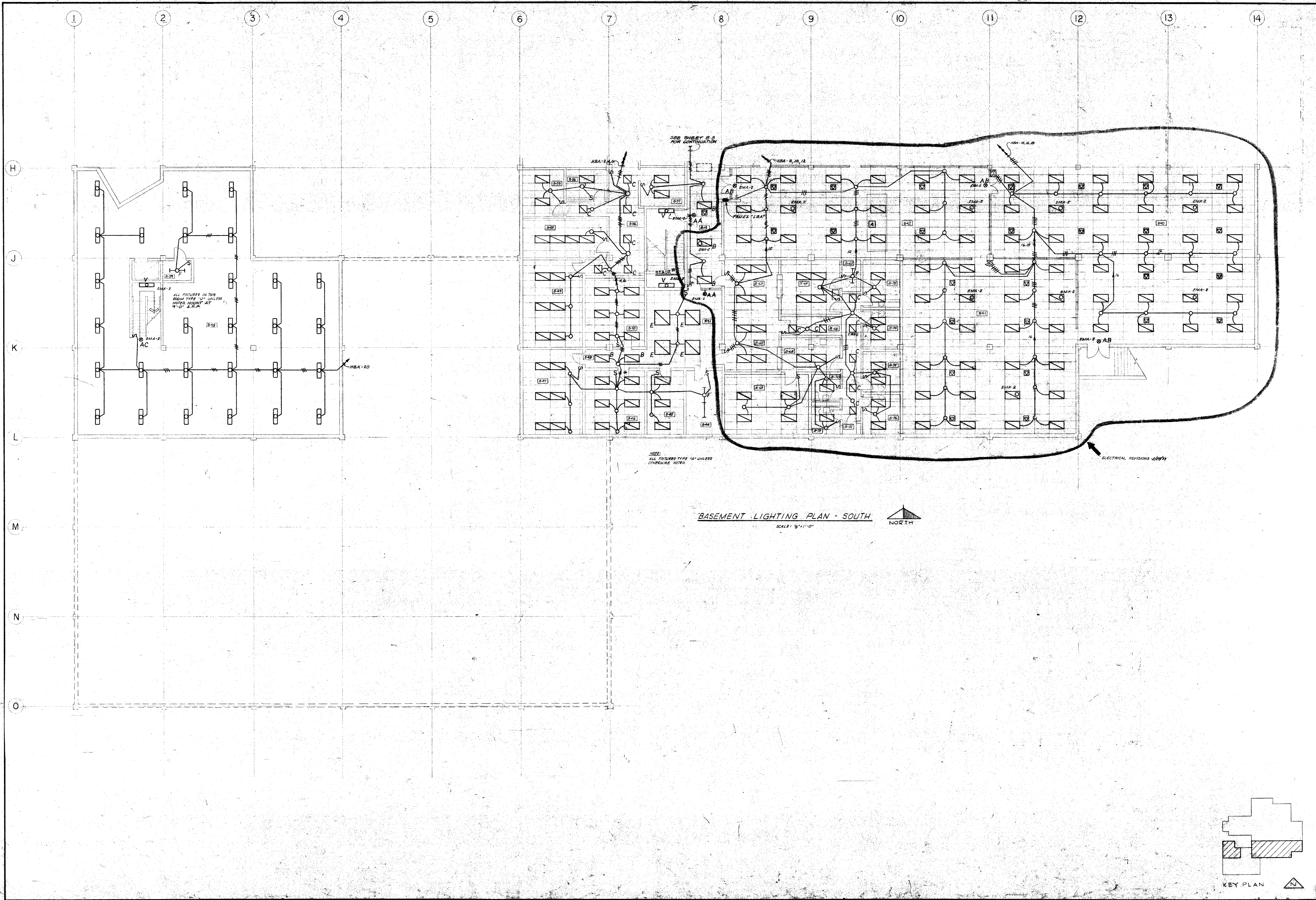
DRAWN BY: [Signature]

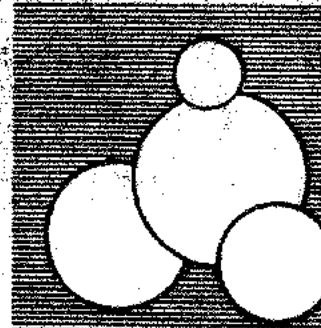
CHECKED BY: [Signature]

DATE: FEB 20, 1991

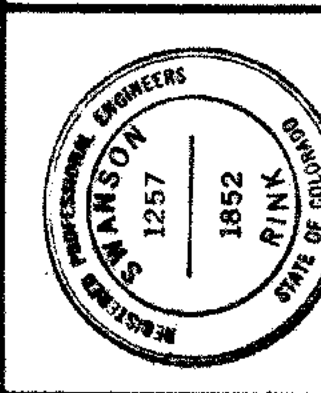
SHEET

104





CARLISLE B. GUY ARCHITECT
COLORADO SPRINGS, COLORADO



PROFESSIONAL ENGINEER
ELECTRICAL
NO. 1257
1962
STATE OF COLORADO

S.G.S.C. COLLEGE CENTER
SOUTHERN COLORADO STATE COLLEGE
FUEBLO, COLORADO
BASEMENT LIGHTING PLAN - SOUTH

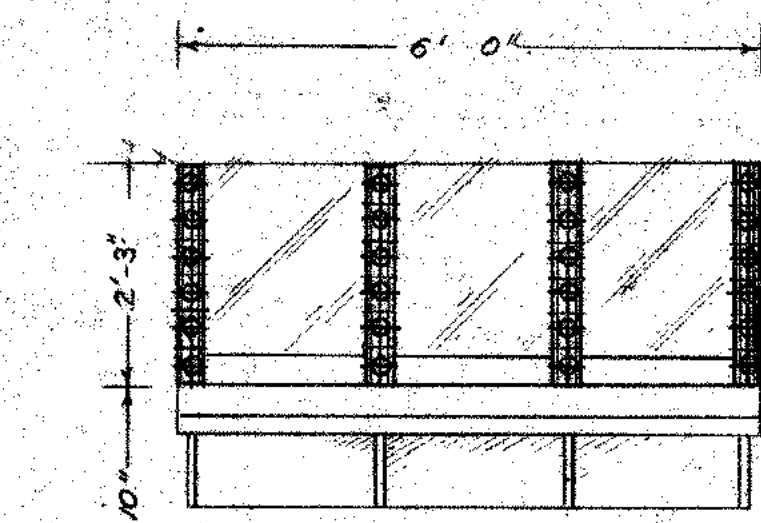
DRAWN BY G.M.
CHECKED BY J.M.
DATE 8/28/74

SHEET 13

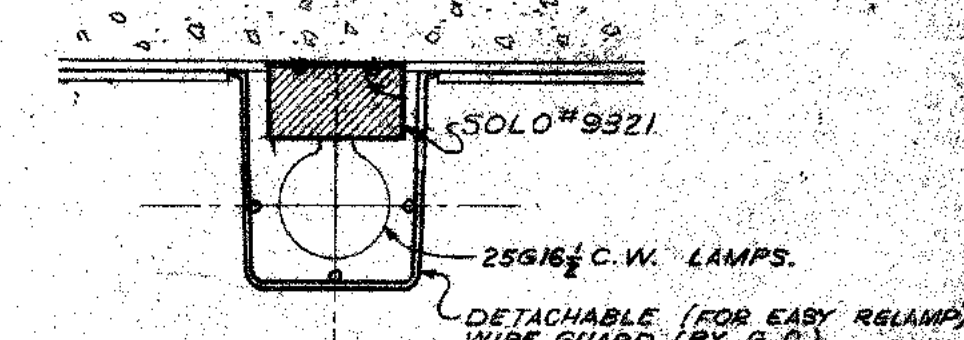
PANEL "L1E"
 SERVICE: 120/208V-3Ø-W
 8A 12550 KVA
 8B 9846 KVA
 8C 10220 KVA
 MAIN BUS SIZE 1000 AMP

PANEL "L1C"
 SERVICE: 120/208V-3Ø-W
 8A 93790 KVA
 8B 41725 KVA
 8C 52025 KVA
 MAIN BUS SIZE 225 AMP

PANEL "L1D"
 SERVICE: 120/208V-3Ø-W
 8A 12550 KVA
 8B 12020 KVA
 8C 12030 KVA
 MAIN BUS SIZE 225 AMP

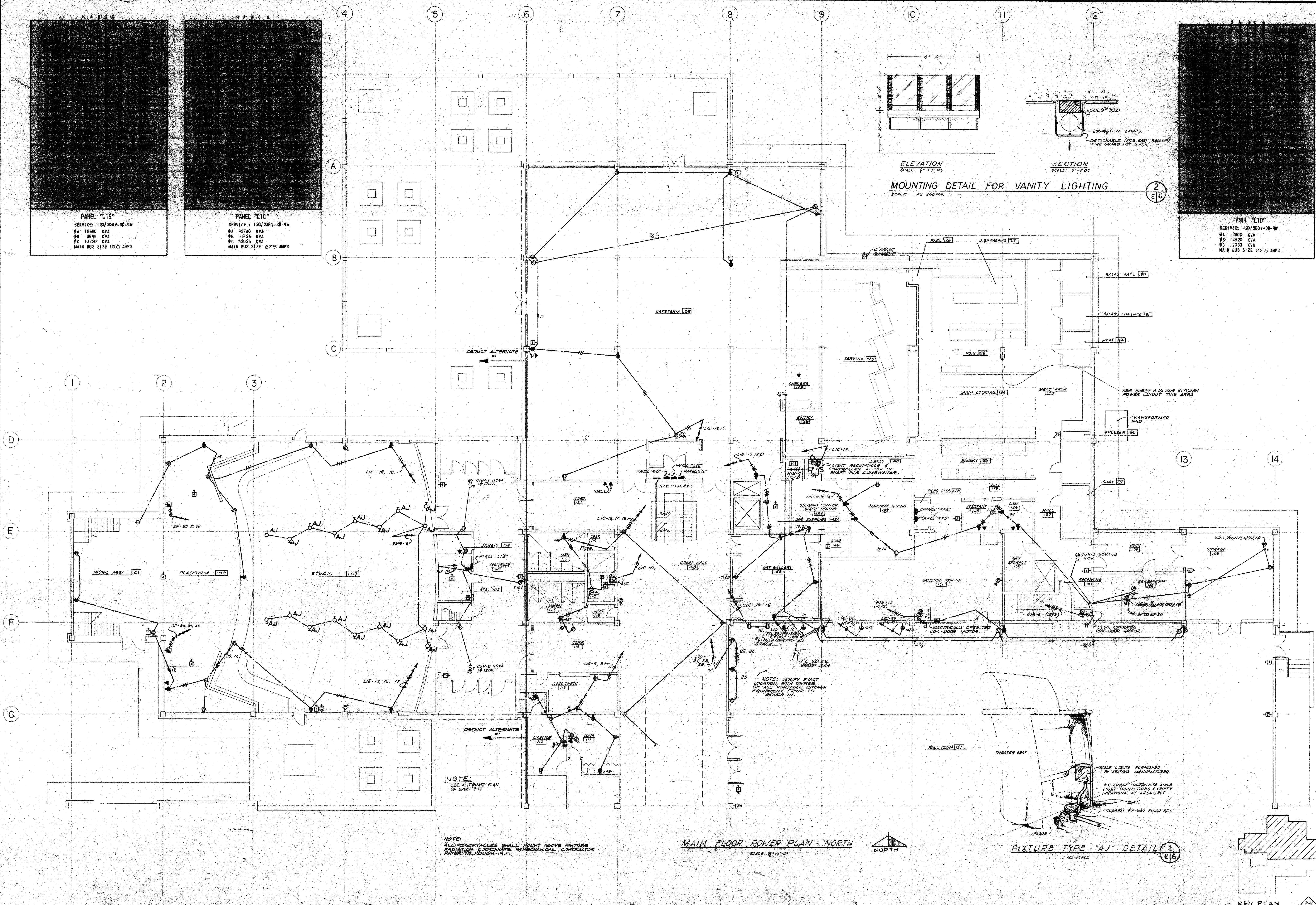


ELEVATION
 SCALE: 1" = 1'-0"
MOUNTING DETAIL FOR VANITY LIGHTING
 SCALE: AS SHOWN.

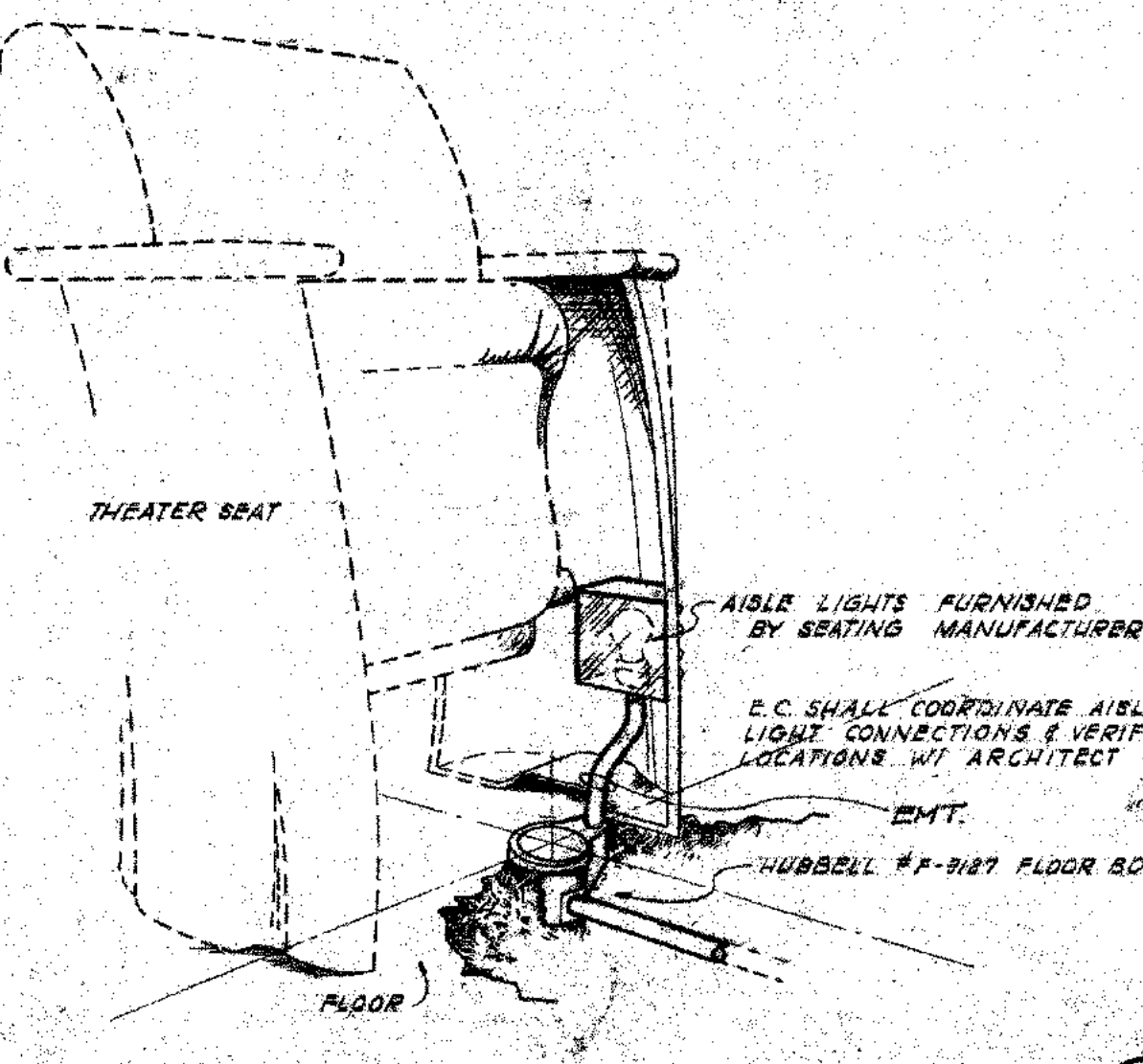


SECTION
 SCALE: 1" = 1'-0"

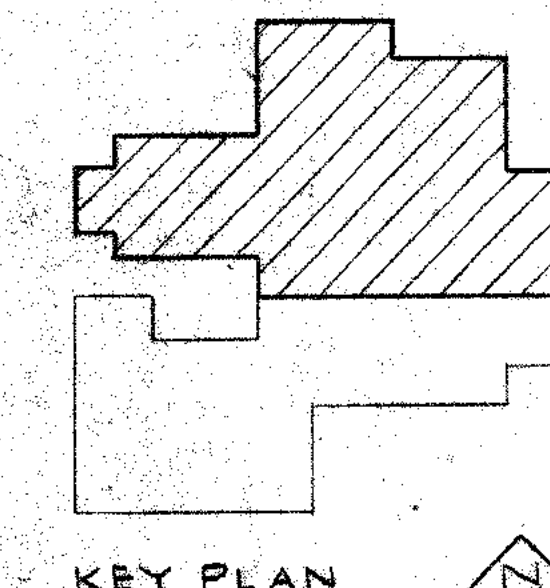
2
 E16



MAIN FLOOR POWER PLAN - NORTH
 SCALE: 1/8" = 1'-0"



FIXTURE TYPE "AJ" DETAIL
 1/4" SCALE
 E16

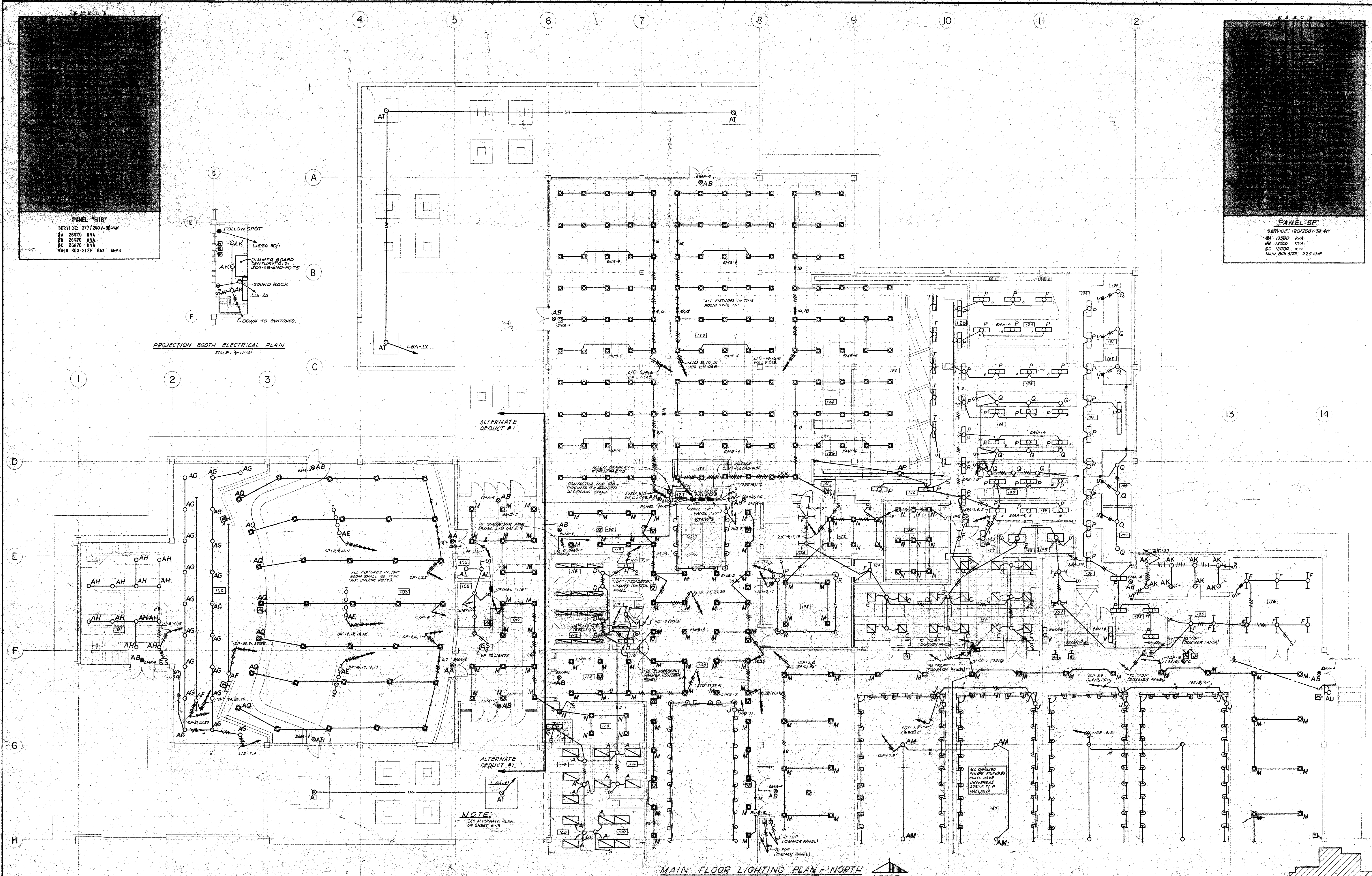
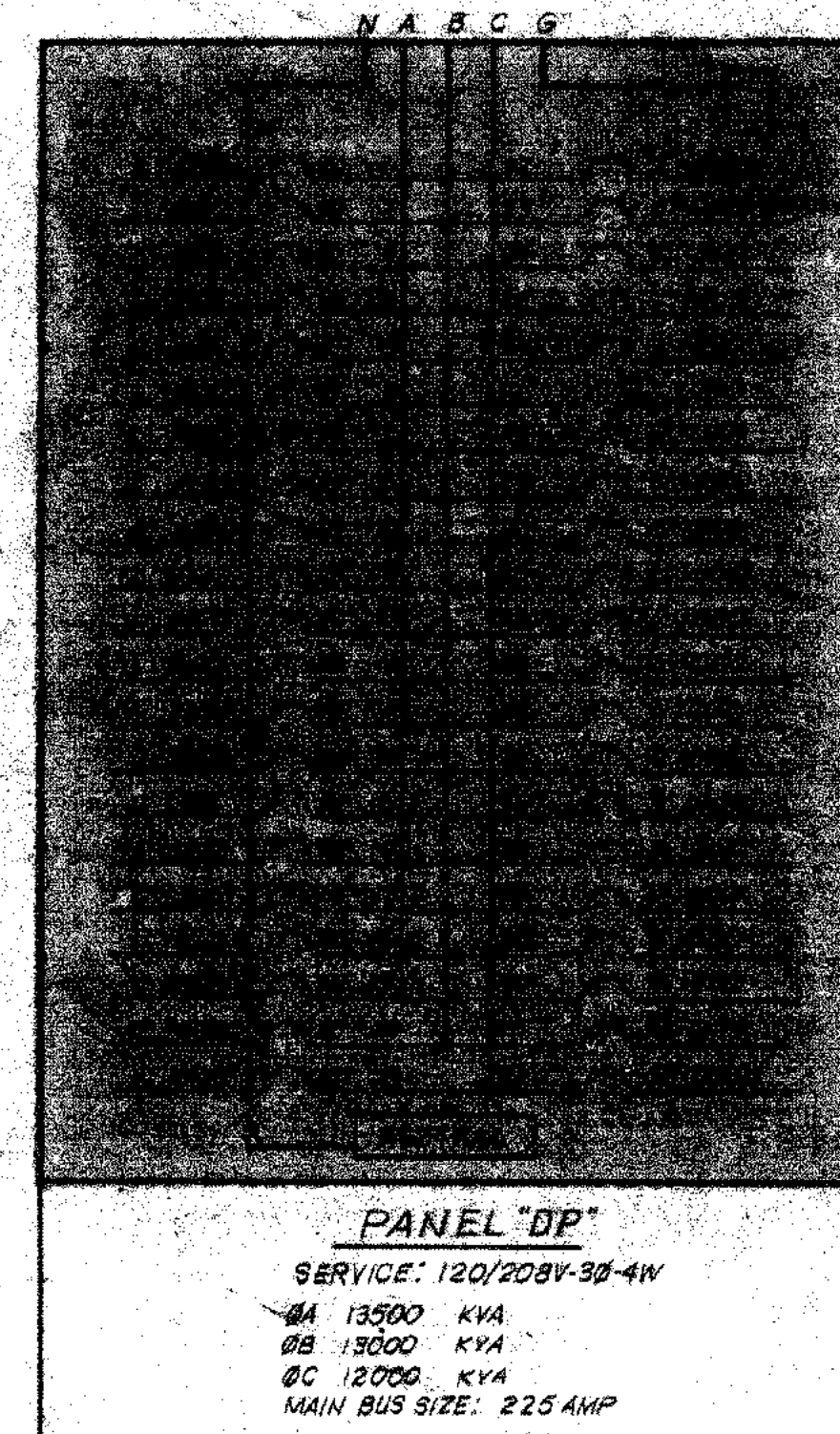
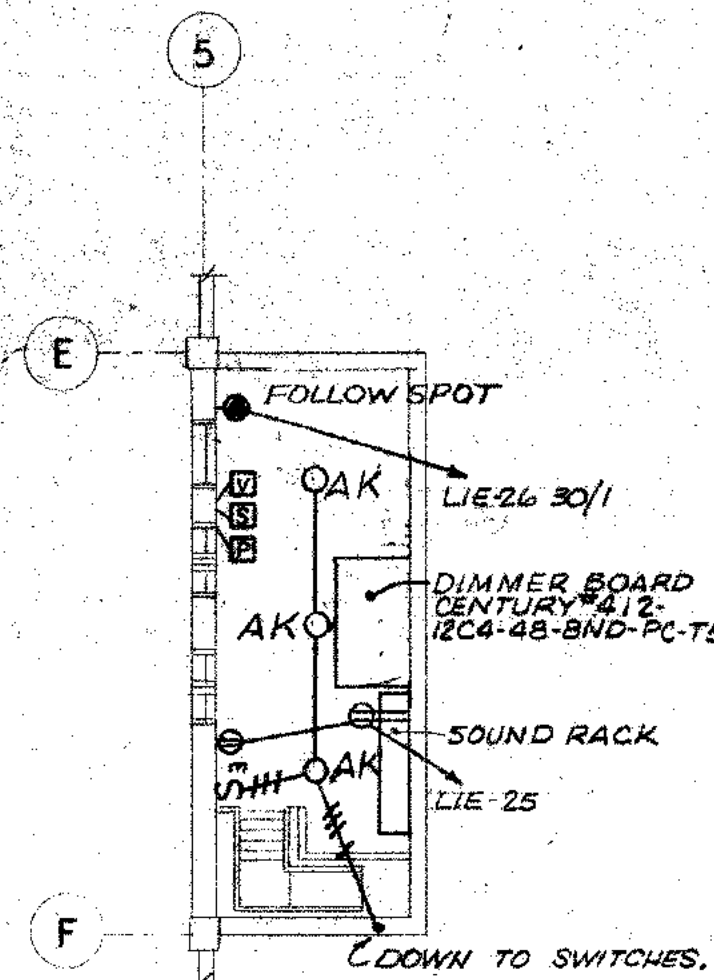
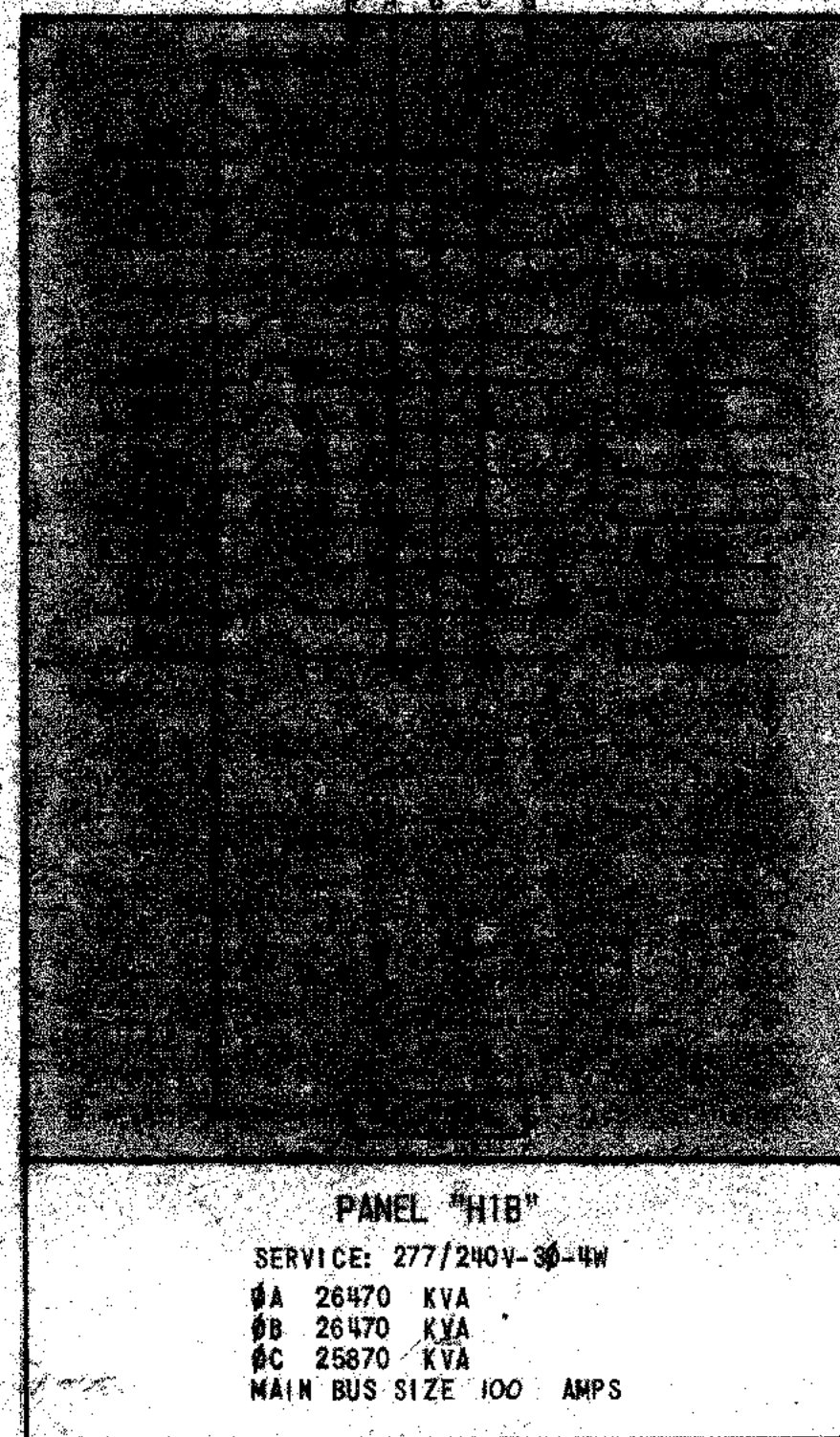


CARLISLE B. GUY ARCHITECT
 COLORADO SPRINGS, COLORADO

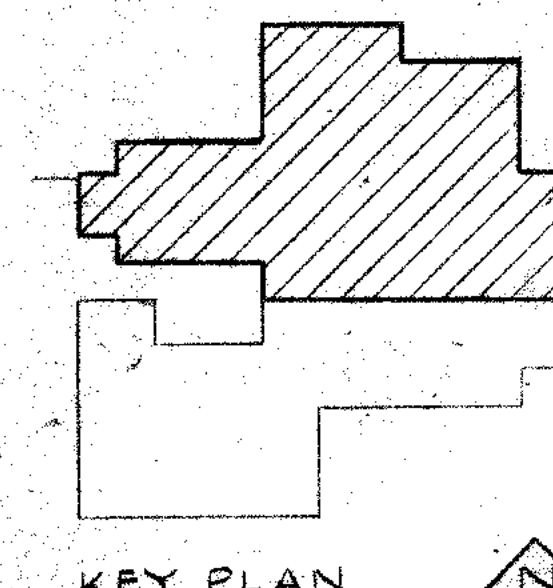
SCS COLLEGE CENTER
 SOUTHERN COLORADO STATE COLLEGE
 PUEBLO, COLORADO
 MAIN FLOOR POWER PLAN - NORTH
 STATE PROJECT NO. 1615

DRAWN BY
 CHECKED BY
 DATE

SHEET



NOTE:
 SEE ALTERNATE PLAN
 ON SHEET 6-15



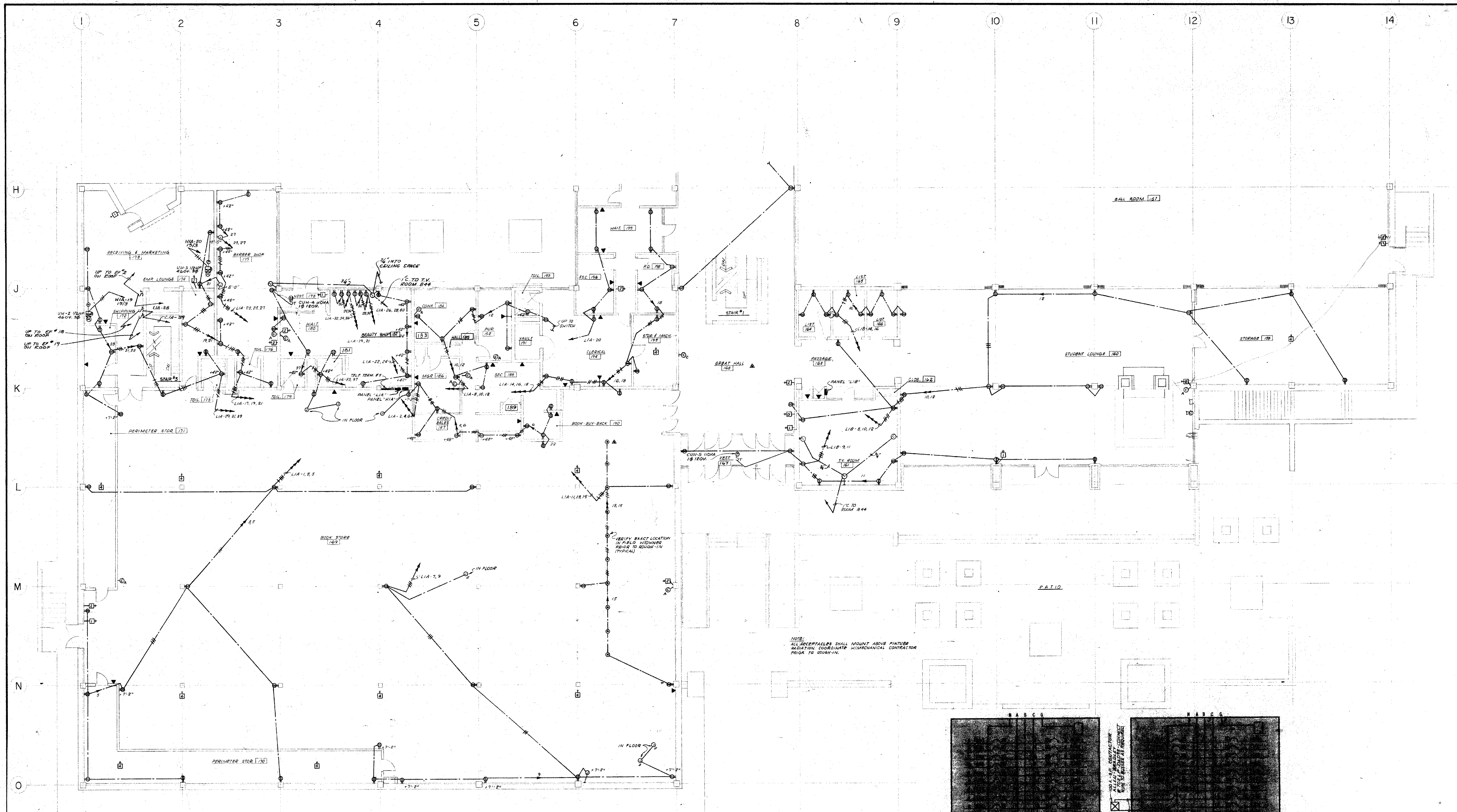
CARLISLE B. GUY ARCHITECT
 1257
 1882
 RINK

STATE OF COLORADO
 ARCHITECT
 NO. 100,000
 EXPIRATION DATE: 12/31/2010

S. S. G. COLLEGE CENTER
 SOUTHERN COLORADO STATE COLLEGE
 PUEBLO, COLORADO
 MAIN FLOOR LIGHTING PLAN - NORTH
 STATE PROJECT NO. 1615

DRAWN BY: SJM
CHECKED BY: JWG
DATE: 10/20/09

SHEET

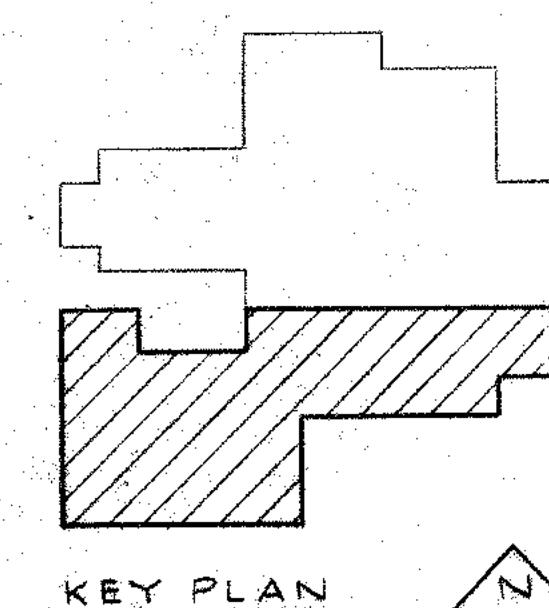


MAIN FLOOR POWER PLAN - SOUTH
SCALE: 1/8" = 1'-0"



PANEL "L1A"
SERVICE: 120/208V-3Ø-4W
8A 16850 KVA
8B 17774 KVA
8C 17840 KVA
MAIN BUS SIZE 225 MIPs
SPLIT BUS PANEL

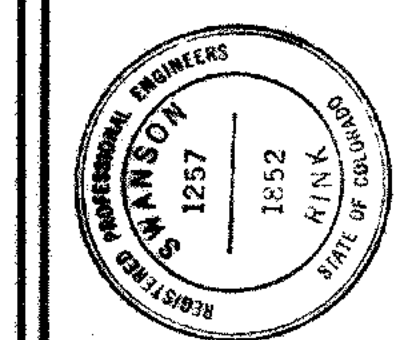
PANEL "L1B"
SERVICE: 120/208V-3Ø-4W
8A 16850 KVA
8B 16640 KVA
8C 15300 KVA
MAIN BUS SIZE 225 MIPs
SPLIT BUS PANEL

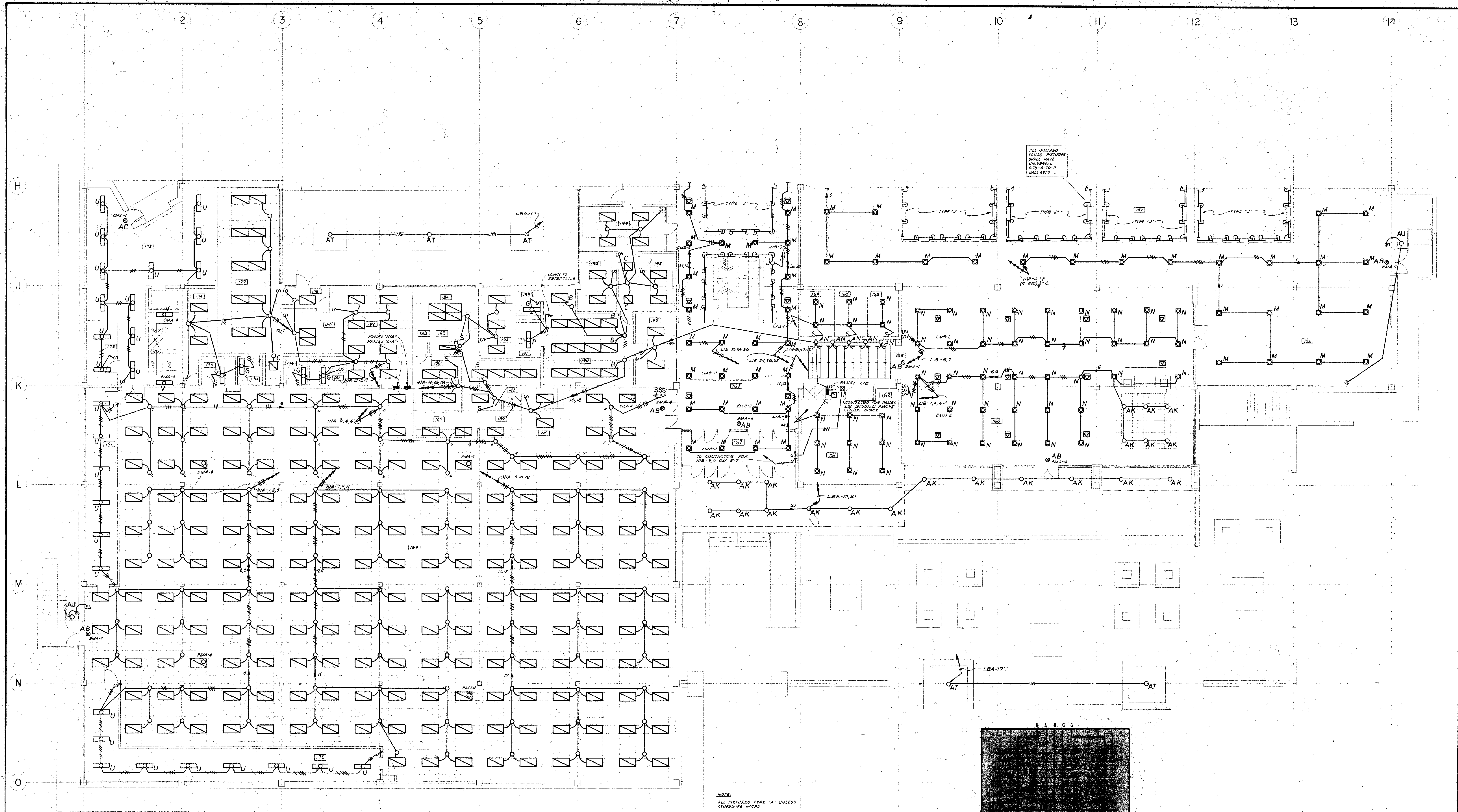


SDSU COLLEGE CENTER
SOUTHERN COLORADO STATE COLLEGE
PUEBLO, COLORADO
STATE PROJECT NO. 1015
MAIN FLOOR POWER PLAN - SOUTH

DRAWN BY: S.J.M.
CHECKED BY: J.M.V.
DATE: 10/20/11
SHEET 103

CARLISE B. GUY ARCHITECT
COLORADO SPRINGS, COLORADO





MAIN FLOOR LIGHTING PLAN - SOUTH
SCALE: 1/8" = 1'-0"



Panel "H1A"

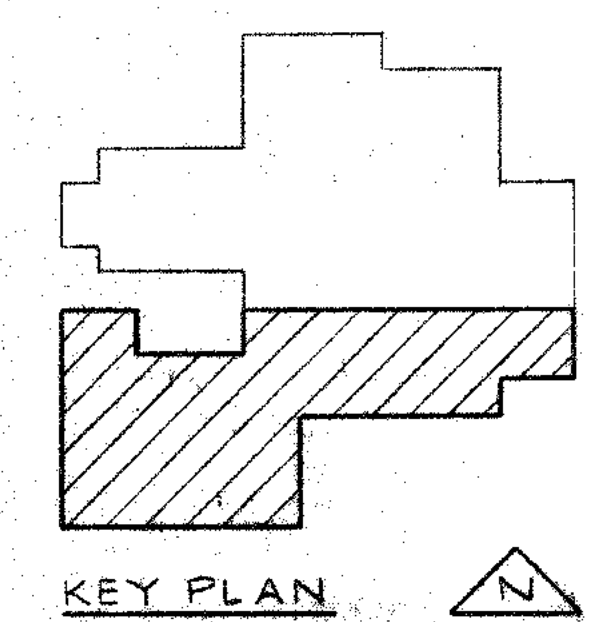
SERVICE: 277/480V-3Ø-4W

9A 23392 KVA

9B 22192 KVA

9C 20792 KVA

MAIN BUS SIZE 100 MIP



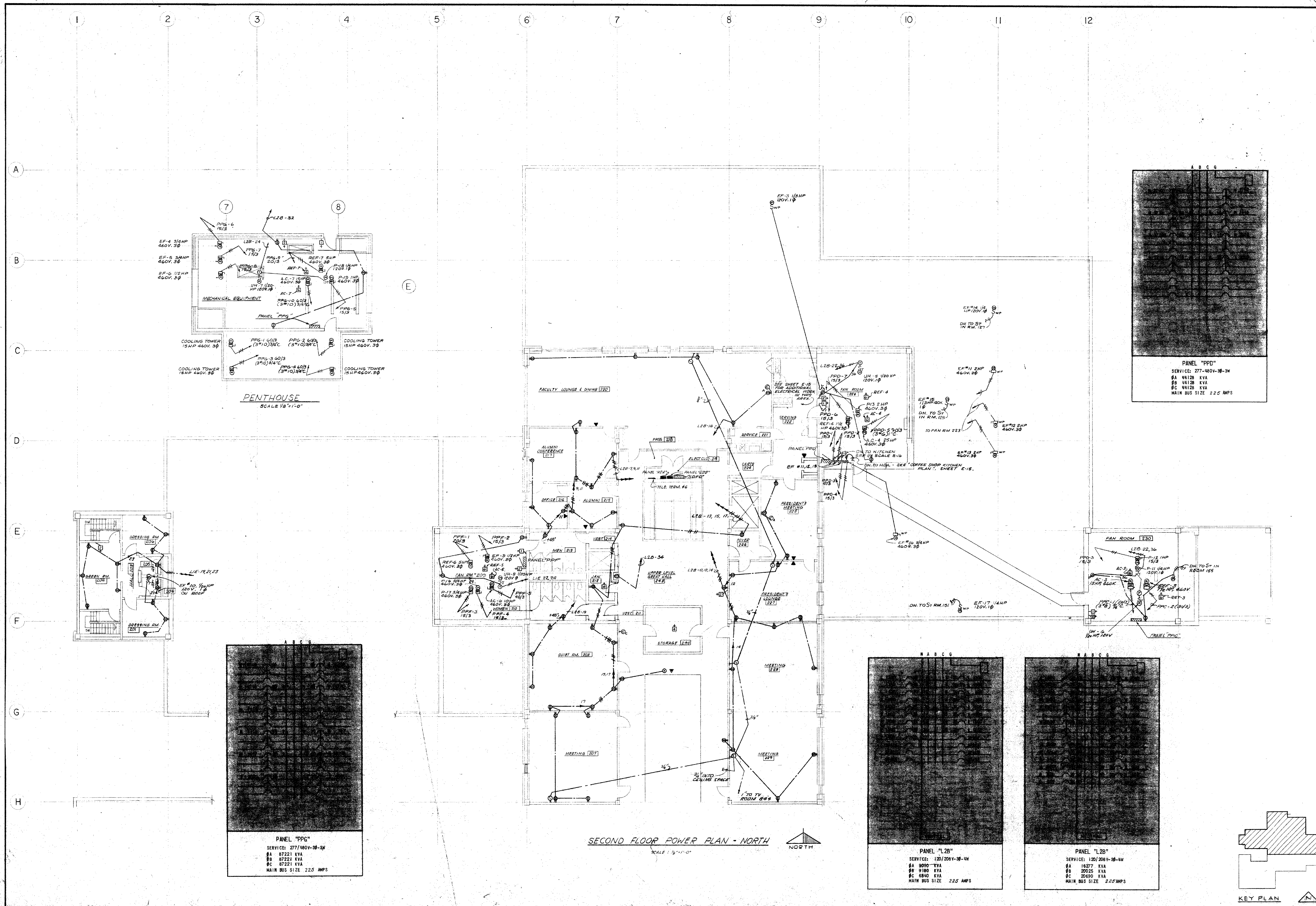
KEY PLAN

CARLISLE B. GUY ARCHITECT
COLORADO SPRINGS, COLORADO

S.U.S.U. COLLEGE CENTER
SOUTHERN COLORADO STATE COLLEGE
PUEBLO, COLORADO
STATE PROJECT NO. 1615
MAIN FLOOR LIGHTING PLAN - SOUTH

DRAWN BY
CHECKED BY
DATE

SHEET 13



CARLISLE B. GUY ARCHITECT

COLORADO SPRINGS, COLORADO

STATE OF COLORADO

PROFESSIONAL ENGINEER

NO. 1571

1982

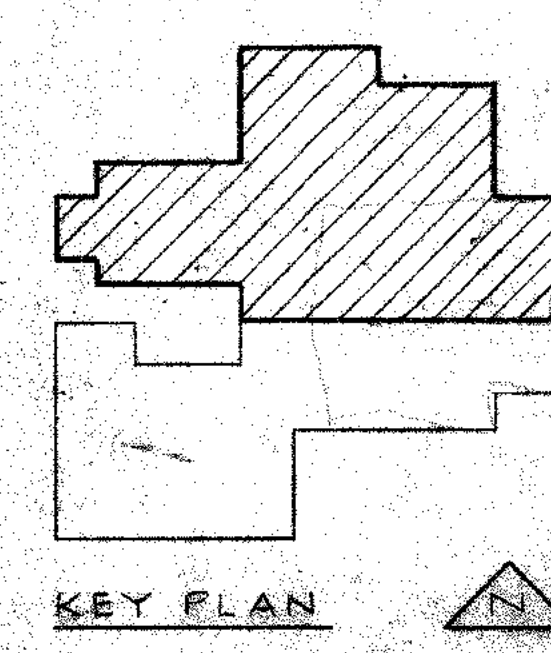
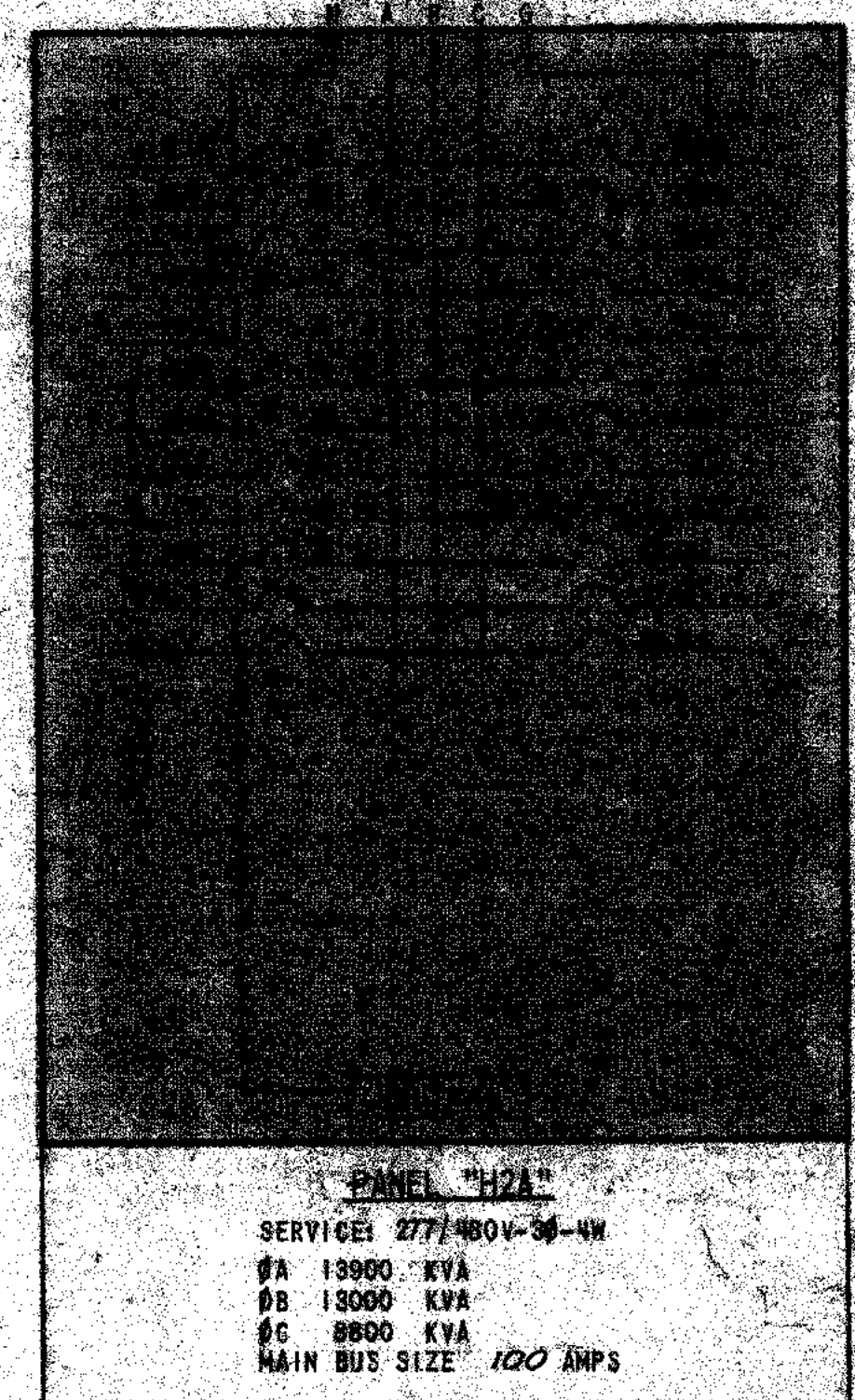
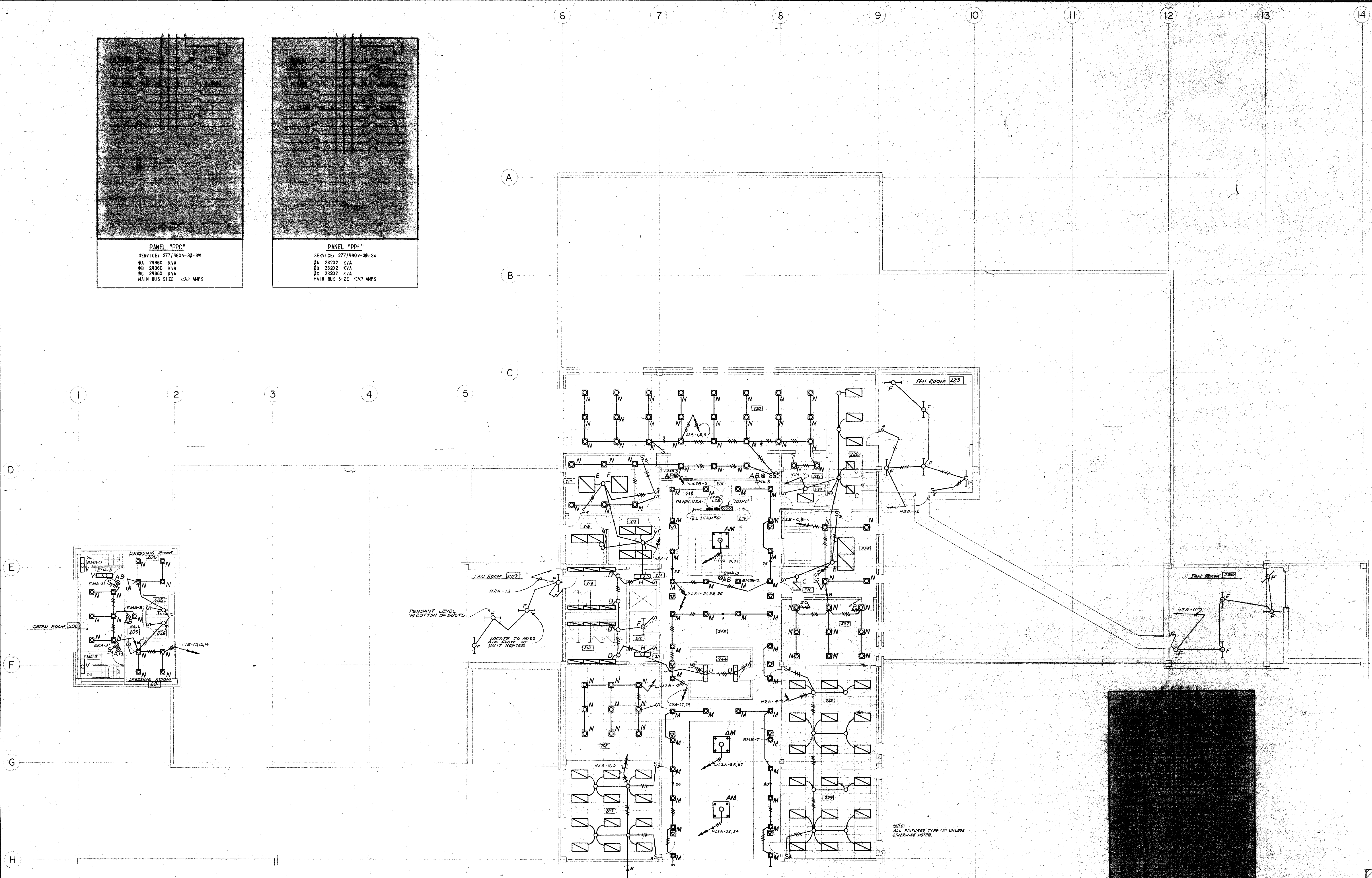
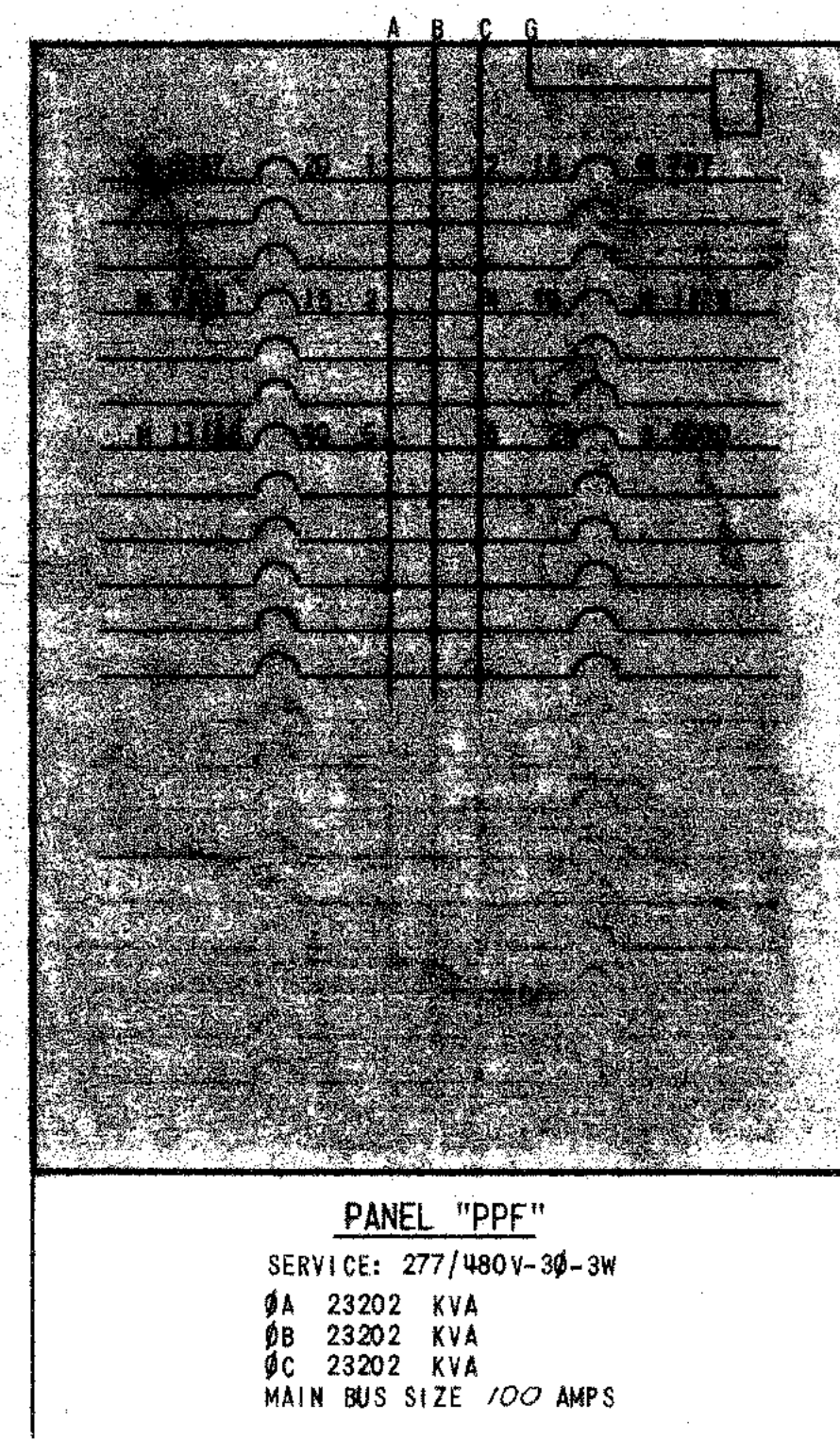
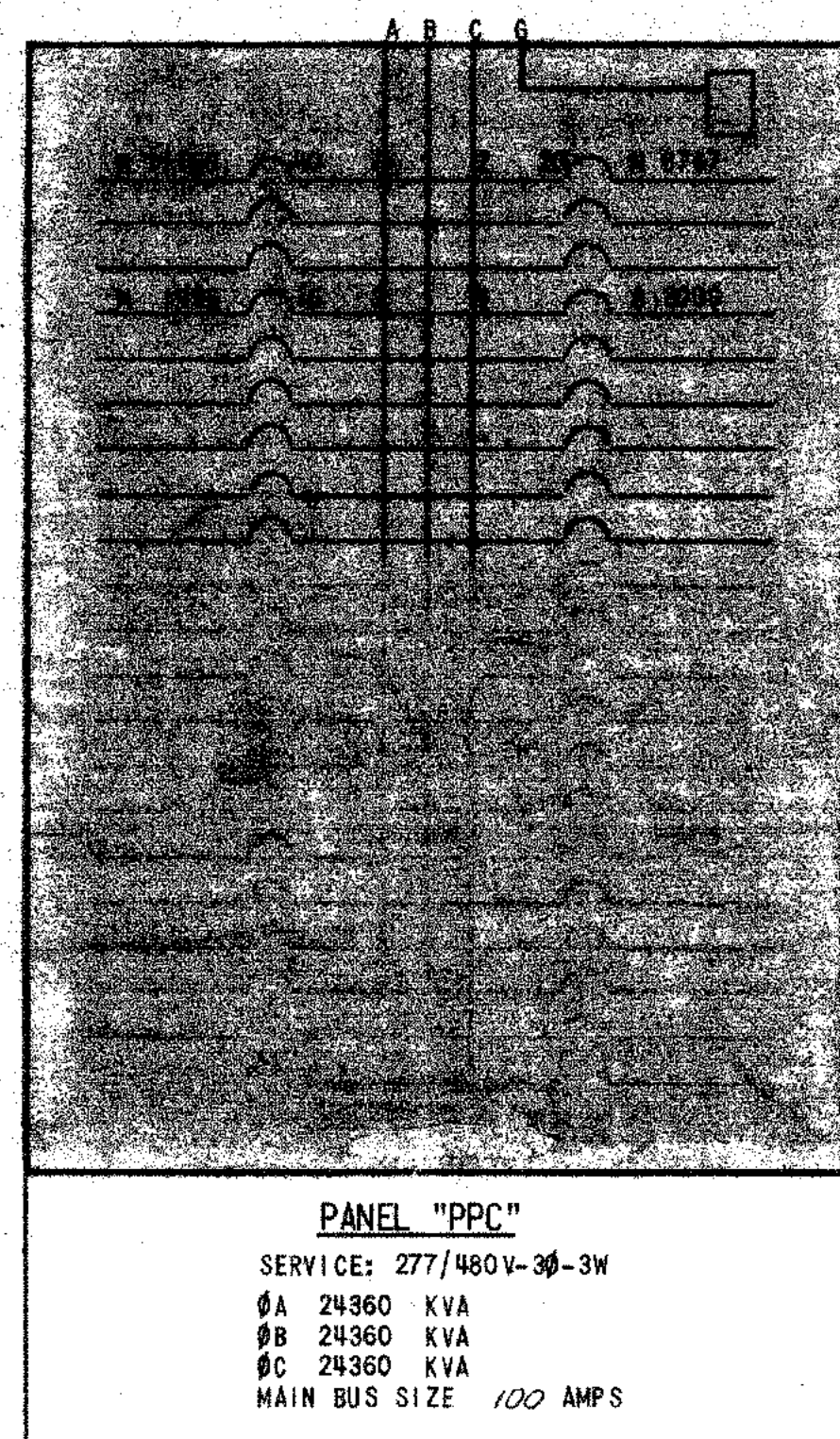
SCSU COLLEGE CENTER
 SOUTHERN COLORADO STATE COLLEGE
 PUEBLO, COLORADO
 SECOND FLOOR POWER PLAN - NORTH

STATE PROJECT NO. 145

DRAWN BY SJM
 CHECKED BY MCL
 DATE 08-28-79

SHEET 110

KEY PLAN



CARLISLE B. GUY ARCHITECT
 COLORADO SPRINGS, COLORADO

S.D.C. COLLEGE CENTER

SOUTHERN COLORADO STATE COLLEGE

PUEBLO, COLORADO

STATE PROJECT NO. 1945

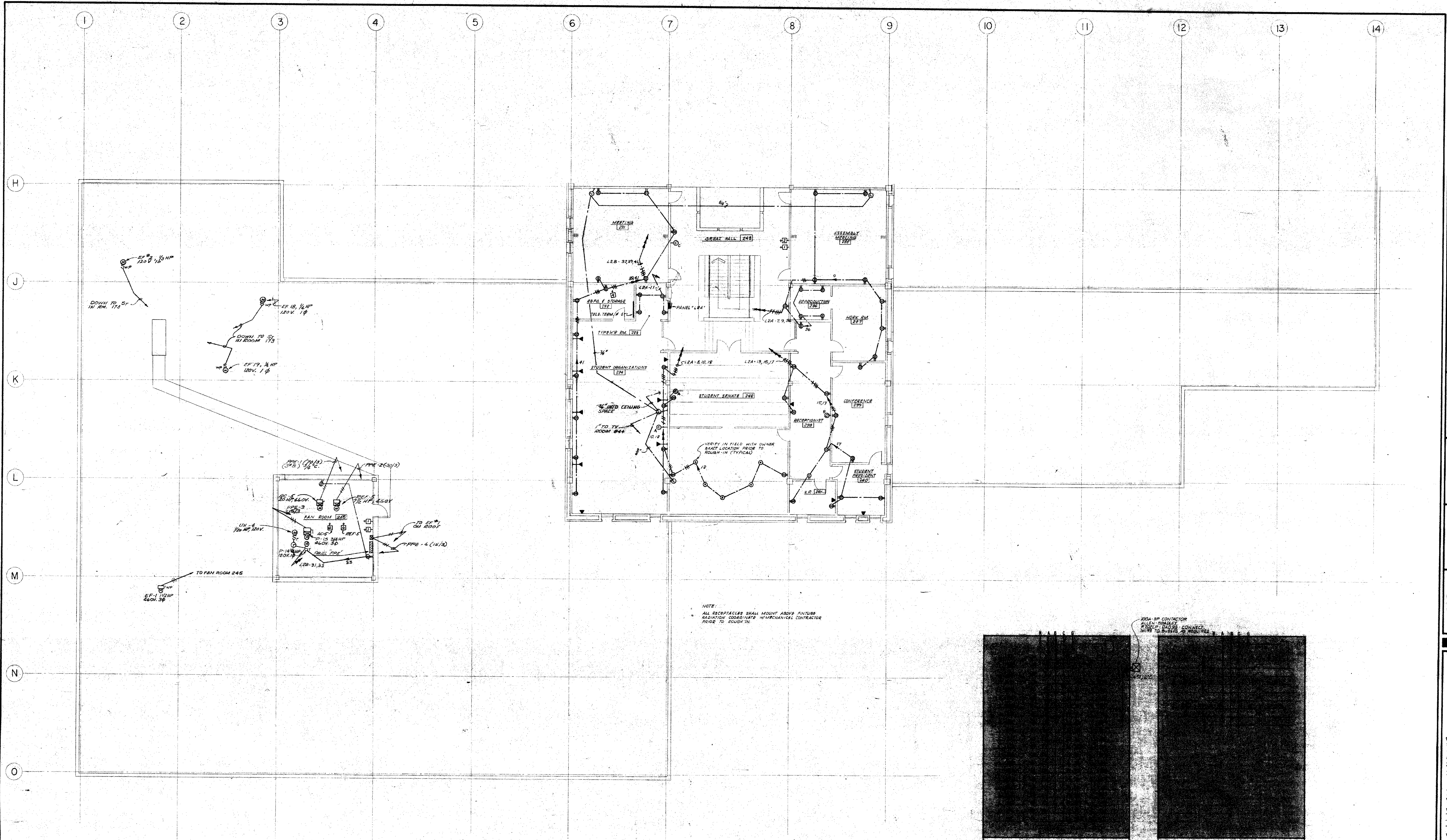
SECOND FLOOR LIGHTING PLAN - NORTH

DRAWN BY SUT

CHECKED BY TCO

DATE 10/28/71

SHEET 111



SECOND FLOOR POWER PLAN - SOUTH
SCALE: 1/8" = 1'-0"

NOTE: ALL RECEPTACLES SHALL MOUNT ABOVE FINISH RADIATION COORDINATE WITH MECHANICAL CONTRACTOR PRIOR TO ROUGH-IN.

NOTE: RDA-BP CONTRACTOR SHALL PROVIDE CONDUIT WIRE TO B-1000, 2' MIN. RDA-BP CONTRACTOR SHALL PROVIDE CONDUIT WIRE TO B-1000, 2' MIN.

PANEL "L2A"
SERVICE: 120/208V-3Ø-W
9A 16800 KVA
9B 16800 KVA
9C 17120 KVA
MAIN BUS SIZE 225 AMP
SPLIT BUS PANEL

PANEL "PRE"
SERVICE: 277/480V-3Ø-W
9A 39768 KVA
9B 39768 KVA
9C 39768 KVA
MAIN BUS SIZE 100 AMP

