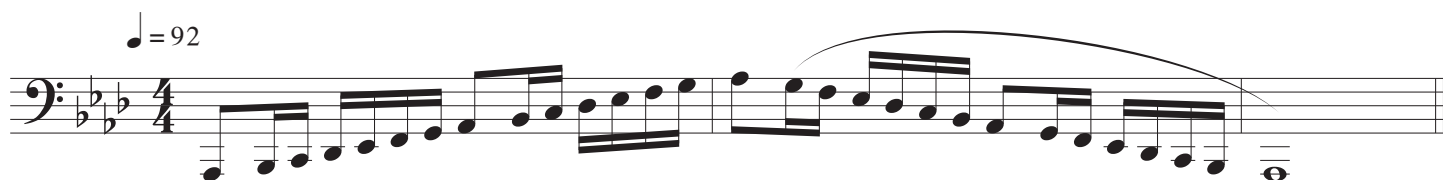


# Colorado All-State Band Audition

## Tuba - Set 4B

1. Record the 2 octave A-Flat Major scale - articulated ascending, slurred descending



2. Record the 2 octave E harmonic minor scale - articulated ascending, slurred descending



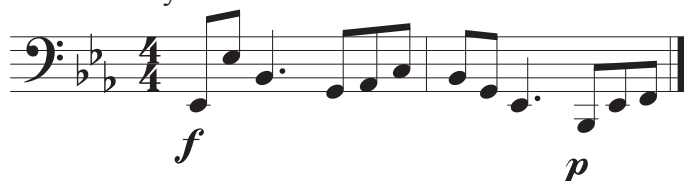
3. Record the chromatic scale - Full Range (your best low note to your best high note) All eight notes.  
Play ascending and descending, articulated both up and down. Tempo: Quarter note = 104

4. Record audition excerpt #1. Etude 9, Page 8 from 70 Studies for BB flat Tuba, Vol. 1 (Blazhevich).  
Published by Leduc.



Start: Pickup to Measure 27 (Tempo I)  
End: End of etude  
Tempo: Quarter Note = 76

4. Record audition excerpt #2. Etude 29, Page 28 from 70 Studies for BB flat Tuba, Vol. 1 (Blazhevich).  
Published by Leduc.



Start: Measure 23 (Beginning of 7th Line)  
End: End of etude  
Tempo: Half Note = 76  
Articulate as written (no slurs)

Metronome markings are recommended TARGETS for students, not REQUIREMENTS. Performing at a slower tempo with greater accuracy and expression may result in a higher score.

Memorization of scales is not required.