

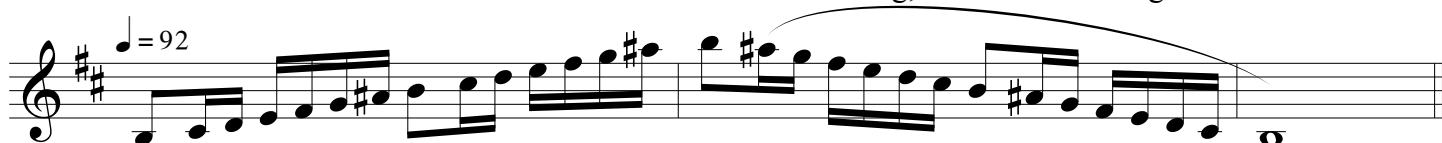
Colorado All-State Band Audition

Bb and Eb Clarinet* - Set 4B

1. Record the 2 octave A-Flat Major scale - articulated ascending, slurred descending

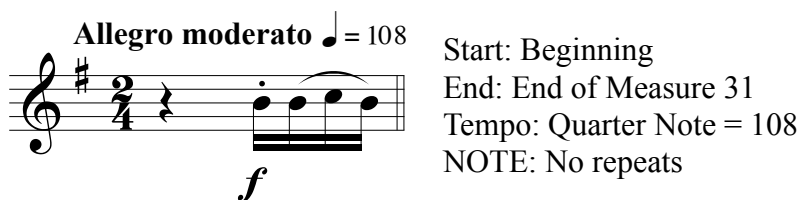


2. Record the 2 octave B harmonic minor scale - articulated ascending, slurred descending



3. Record the chromatic scale - Full Range (your best low note to your best high note) All eight notes.
Play ascending and descending, articulated both up and down. Tempo: Quarter note = 104

4. Record prepared excerpt #1. Page 12, #8 from 32 Etudes for Clarinet - Revised Edition (Rose).
Published by Carl Fischer



Start: Beginning
End: End of Measure 31
Tempo: Quarter Note = 108
NOTE: No repeats

5. Record prepared excerpt #2. Page 17, #13 from 32 Etudes for Clarinet - Revised Edition (Rose).
Published by Carl Fischer



Start: Beginning
End: End of Measure 24
Tempo: Quarter Note = 63

All students proficient on E-flat clarinet are encouraged to also record and submit an E-flat clarinet audition - there is no additional audition fee (one fee covers both your auditions) and the materials are the same for both instruments (do not transpose for E-flat clarinet- play as written for both instruments).

All E-flat clarinet students MUST also audition on B-flat clarinet. The B-flat clarinet audition will determine membership in the band and the E-flat clarinet double will be determined by the E-flat clarinet audition.

Metronome markings are recommended TARGETS for students, not REQUIREMENTS. Performing at a slower tempo with greater accuracy and expression may result in a higher score.

Memorization of scales is not required.