

CSU PUEBLO WORKERS' COMPENSATION DESIGNATED PROVIDERS

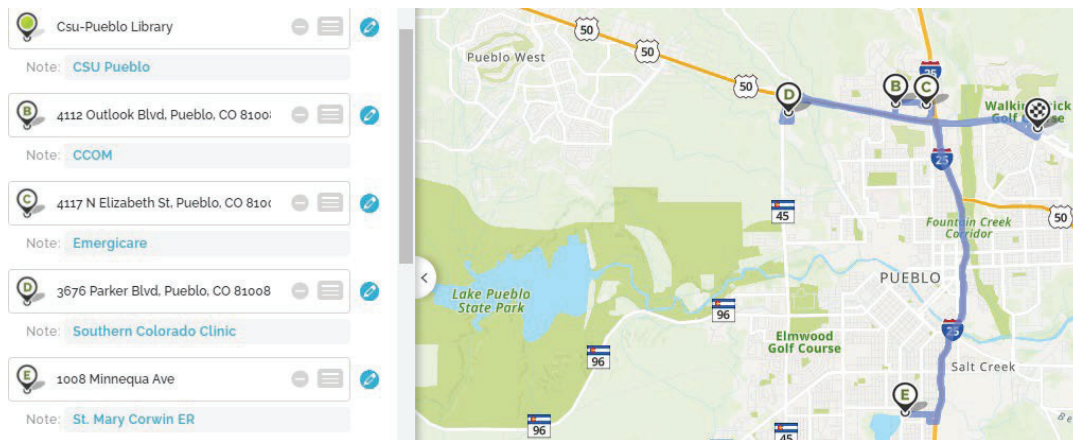
In the event of a life or limb-threatening emergency call 911 or go to the nearest emergency medical facility. If you are seen after hours or at an emergency room you must follow up with a CSU Pueblo designated provider.

CSU Pueblo requires all work-related accidents and illnesses be reported to the immediate supervisor within the work shift they occur. The injured employee and the supervisor must report the incident to Human Resources at hr@csupueblo.edu and complete and send to HR the incident form located at: <https://codwc.app.box.com/v/wc15-workersclaim>. Colorado law requires an injured employee to report an on the job injury in WRITING WITH FOUR (4) working days.

All treatment must be provided by a designated provider or referred by the designated provider. You may not go your own health care provider and no treatment from your own health care provider will be covered.

CSU-Pueblo Designated Provider List

<p><u>Concentra</u> 4112 Outlook Blvd. Suite 325 Pueblo, CO 81001 719-562-6300 Monday-Friday 8am-5pm</p>	<p><u>Concentra Urgent Care</u> 4117 N. Elizabeth St. Pueblo, CO 811008 719-545-0788 Monday – Friday 8am – 6pm Saturday 8am – 4pm</p>
<p><u>Southern Colorado Clinic - Department of Occupational Medicine</u> 3676 Parker Blvd. Suite 220 Pueblo, CO 81008 719-553-2207 Monday – Friday 7:30am – 6pm</p>	<p><u>St. Mary Corwin ER</u> 1008 Minnequa Ave. Pueblo, CO 81004 1-800-228-4039</p>



WORKER'S COMPENSATION MEDICAL PROVIDER ACKNOWLEDGEMENT

I have received the Colorado State University Pueblo Workers' Compensation Designated Provider list and understand I must select a provider from this list for medical treatment of my on the job injury or illness.

Employee Signature

Date