



CSU PUEBLO'S COVID-19 RESPONSE AND PLANNING MASTER PLAN 2021

OVERVIEW

Colorado State University Pueblo's COVID-19 Response and Planning Team, including Cabinet and executive leadership, have closely consulted with Pueblo Department of Public Health to understand better the impact of [Pueblo County's current COVID-19 Dial status](#), including, 1) local and state COVID-19 transmission rates, 2) increasing hospitalizations and deaths, and 3) projections and data models for January 1 and beyond. We have contracted with a robust testing and contact tracing partner, which will allow us to safely expand in-person learning, living, and student support services for spring 2021.

Across the state — and specifically in Pueblo — our expectation is that, despite many best efforts, we may see a considerable surge after the holidays. ***Our own considerable efforts to expand testing and contact tracing, paired with the planned schedule for Pueblo's access to the vaccine, give us renewed hope for expanded in-person learning this spring and a more active summer and fall 2021.***

To that end, this plan — shared here as a high-level overview — considers 1) the risk associated with the weeks immediately following January 1st, 2) the increased safety that expanded testing and contact tracing can provide for limited in-person living and learning at CSU Pueblo, 3) the likelihood that widespread access to the vaccine by late spring/early summer will create new and improved opportunities for expanded and safe in-person living and learning by April or May (Fig. 2).

ABOUT TESTING & SPRING SAFETY

Beginning in the spring semester, CSU Pueblo will be collaborating with Spartan Medical to provide **NO COST** COVID-19 testing to all students as part of the existing coverage students have through the Wolfpack Wellness Center. Likewise, all employees who are living, learning, and working on the Pueblo campus will continue to have access to free COVID-19 testing, both antigen and PCR, thanks to our new partnership.

Based on the recommendation of the Pueblo County Public Health Department and pursuant to the [Public Health Emergency Response Policy](#), the University is requiring that all students and employees who come to campus be tested. The Policy states, "in response to a public health emergency or potential health emergency, the President of CSU Pueblo, in consultation with the Chancellor of the CSU System, may take such action as needed to comply with public health emergency guidance and recommendations." Testing will be required at every level of the [Colorado COVID-19 Dial](#) (Fig 1). Failure to comply with the testing requirement may result in removal from campus or student housing, if applicable.

TESTING REQUIREMENTS*

1. Testing is required at every level of the Colorado COVID Dial.
2. All students and employees who are working, teaching, living, learning, or accessing any services or offices on the CSU Pueblo campus will be required to test, at a minimum, once a week.
3. All employees and students will receive additional direction for creating a secure account on the “CSU Pueblo Smart Return to Work” portal before arriving to campus.
4. All employees, resident students, and student athletes will be required to immediately test upon their return to campus, before accessing facilities, buildings, offices, or services.
5. The CSU Pueblo Smart Return to Work portal will require a daily health assessment of all employees and will be your portal for registering for tests, and receiving weekly results.
6. Tests must be administered at CSU Pueblo.

**Subject to change*

CAMPUS OPERATIONS: SPRING 2021

1. This plan is based on an operational model linked directly to Pueblo County’s COVID-19 Dial status. Though any county developments may trigger new or different responses from campus leadership, and thus changes to existing campus operations, our goal is to leverage the many lessons learned over the past 10 months and reduce uncertainty for as many campus stakeholders whenever possible.
2. This plan considers guidance provided by the Pueblo Department of Public Health and Environment that recommends operations based on data that suggest Pueblo County will remain at RED on the Colorado COVID Dial for the immediate future (see the more detailed [RED Operations Plan](#)).

NOTE: a move to ORANGE would allow a 25% return to in-person services and an expanded opportunity for in-person classes and limited social activities (see [ORANGE Operations Plan](#)). A move to a more restrictive PURPLE would result in many more limitations on in-person campus activities (see [PURPLE Operations Plan](#)).

3. General Campus COVID-19 Testing Information
 - a. Mandated, weekly surveillance testing will be conducted at the Walking Stick Testing Site Monday-Friday from 9 a.m.-5 p.m.
 - b. Testing will be available on the weekend through the Wolfpack Wellness Center (WWC) on Saturday and Sunday from 9 a.m.-5 p.m., on January 16-17, 2021.
 - c. The Wolfpack Wellness Center will remain the primary resource for point-of-care services during spring 2021.
 - d. The WWC may refer students or employees to the Walking Stick Testing Site to receive a confirmatory PCR test.
 - e. Testing must be completed, and results received, before anyone may go to their destination on campus. Those who will be on campus more frequently must be retested every 72 hours. If your first day of work (or class or activity) occurs on a weekend or before 8am (or after 5pm), you must schedule testing for the last working day (9am-5pm) before your first day on campus if you will arrive to campus on the weekend or before testing hours.



- f. Supervisors must work with their employees to schedule on campus workdays to ensure testing requirements are met.
 - g. Student athletes will receive direction regarding testing requirements from the Athletic Department.
 - h. Students who reside in campus housing will receive specific direction from Residence Life and Housing staff regarding testing.
 - i. Students taking courses on campus may receive guidance on testing from their professors, campus communications, and the Office of the Dean of Students.
 - j. University Partners, without a CSU Pueblo ID, may still receive an antigen COVID-19 test at the Wolf Pack Wellness Center by appointment only. Call 719-549-2830.
 - k. Testing is not available for non-CSU Pueblo individuals at this time.
4. **JANUARY 4:** Campus reopens from the holiday break. This return will be fully-remote for employees, with the exception of critical in-person services as defined by the specific plan for each color-coded Colorado COVID Dial (see Fig.1) level.
- a. Residence halls open on January 15, 2021. Early arrival information can be found on the Residence Life & Housing webpage:
<https://www.csupueblo.edu/residence-life-and-housing/forms.html>.
 - b. Grab and go food options will be available in the Pack Cafe starting on January 17, 2021 at 4:30 p.m.
 - c. All residential students are encouraged to self-quarantine in the residence halls prior to in-person classes.
 - d. International students are required to quarantine for 14 days from arrival to campus.
5. **JANUARY 18:** All classes will start on schedule and remotely, with exceptions for health sciences and Nursing courses, approved in advance by the provost. The instructor(s) for any classes approved for in-person learning will contact students directly. Otherwise, classes will be remote for the first two weeks.
6. **FEBRUARY 1 - APRIL 16:** Campus Operations continue to follow campus plans established around the Colorado COVID Dial, as follows:
- a. **PURPLE: Stay at Home Mandated.** Only minimal essential personnel allowed on campus. No in person classes (unless determined to be VERY critical and allowed by the provost, with approval from local public health officials); no athletics activities or practices; campus facilities will be closed. All operations will be fully remote, as possible. Testing will be required for any student or employee who is working, teaching, or learning in person on the Pueblo campus or at partner

facility or institution in Pueblo County. At this time, testing is not required for the CSU Pueblo Tower location students or staff in Colorado Springs (unless they spend time or attend classes or activities in Pueblo). [READ THE PURPLE PLAN HERE.](#)

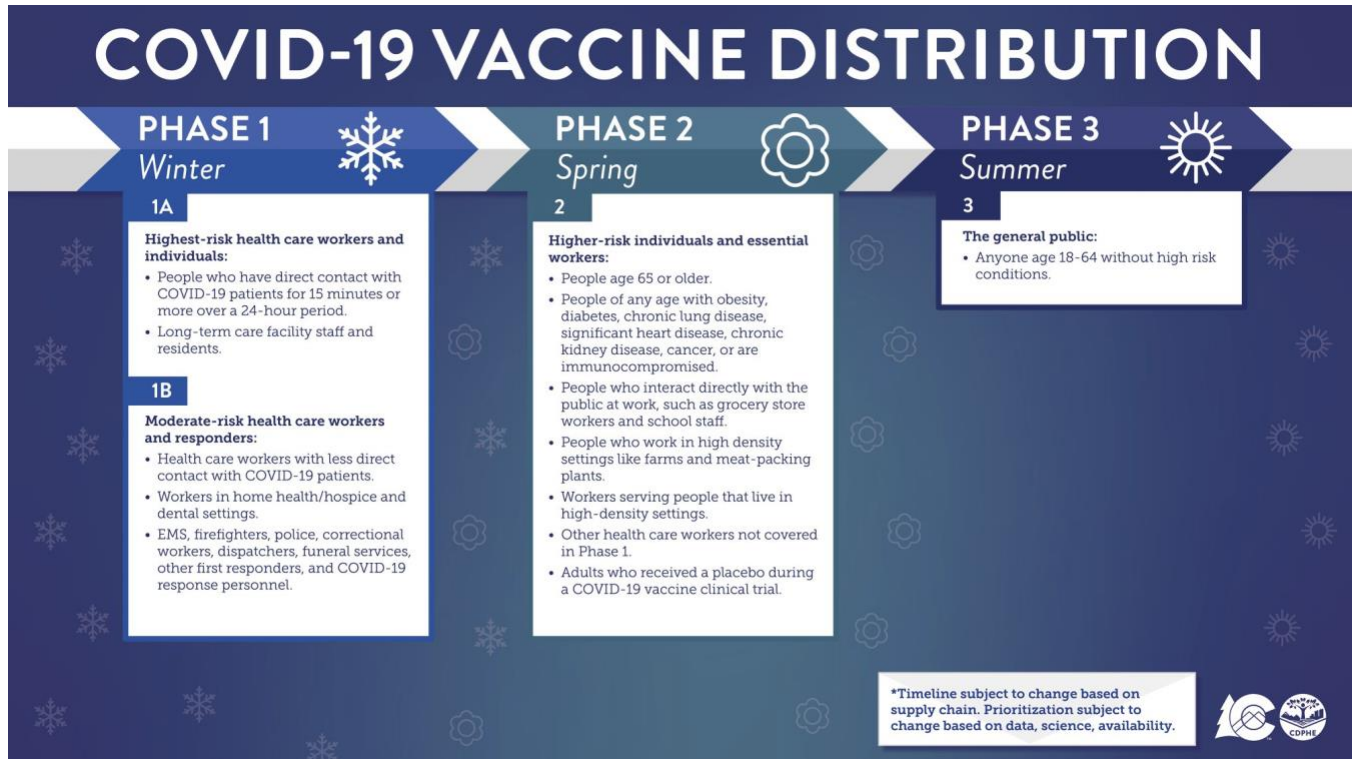
- b. **RED: Stay at Home Recommended.** Remote operations for campus. Classes that can remain or go online/remote should. Limited in-person critical classes/research allowed with approval of the provost. Limited services for students who remain on campus. Approved athletics programs only. Testing will be required for any student or employee who is working, teaching, or learning in person on the Pueblo campus or at partner facility or institution in Pueblo County. At this time, testing is not required for the CSU Pueblo Tower location students or staff in Colorado Springs (unless they spend time or attend classes or activities in Pueblo). [READ THE RED PLAN HERE.](#)
- c. **ORANGE: High Risk.** Return to 25% staffing. All offices return for limited in-person services during set hours. Expanded opportunity for in-person classes, recreational activities, and small gatherings or events. COVID capacity and public health approved, in person limits apply to all activities and classes. Testing will be required for any student or employee who is working, teaching, or learning in person on the Pueblo campus or at partner facility or institution in Pueblo County. At this time, testing is not required for the CSU Pueblo Tower location students or staff in Colorado Springs (unless they spend time or attend classes or activities in Pueblo). [READ THE ORANGE PLAN HERE.](#)
- d. **YELLOW/BLUE: Concern/Caution.** Return to 50% staffing of all offices for in-person services 8am-5pm. Classes may return to original COVID plan (up to 50% or more classes in person). COVID capacity and public health approved, in person limits apply to all activities and classes. Testing will be required for any student or employee who is working, teaching, or learning in person on the Pueblo campus or at partner facility or institution in Pueblo County. At this time, testing is not required for the CSU Pueblo Tower location students or staff in Colorado Springs (unless they spend time or attend classes or activities in Pueblo). **These more detailed operational plans, TBA.**
- e. **GREEN: Protect Your Neighbors.** Campus may return to in-person services, in close collaboration with PDPHE, with the flexibility — as the situation across the county or on campus changes — to return to more restrictive levels. COVID capacity, in person limits apply to all activities and classes. Testing will be required for any student or employee who is working, teaching, or learning in person on the Pueblo campus or at partner facility or institution in Pueblo County. At this time, testing is not required for the CSU Pueblo Tower location students or staff in Colorado Springs (unless they spend time or attend classes or activities in Pueblo). **These more detailed operational plans, TBA.**



Figure 1. THE COLORADO COVID DIAL

	LEVEL GREEN: PROTECT YOUR NEIGHBORS	LEVEL BLUE: CAUTION	LEVEL YELLOW: CONCERN	LEVEL ORANGE: HIGH RISK	LEVEL RED: SEVERE RISK	LEVEL PURPLE: EXTREME RISK
High Risk Populations	Use Caution	Use Caution	Advised to Stay at Home	Strongly advised to Stay at Home	Stay at Home	Stay at Home Ordered
Variations	Eligible for both outdoor and indoor, site-specific variances if approved by LPHA	Eligible for both outdoor and indoor, site-specific variances if approved by LPHA	Eligible for outdoor, site-specific variances if approved by LPHA	Not eligible	Not eligible - Current variances reevaluated	Not eligible - Current variances revoked
Personal Gathering Size	Per local guidance	Up to 10 from no more than 2 households	Up to 10 from no more than 2 households	Up to 10 from no more than 2 households	NONE	NONE
Childcare	OPEN	OPEN	OPEN	OPEN	OPEN	OPEN
P-12 Schools	In-person	In-person	In-person suggested, hybrid, or remote as appropriate	In-person suggested, hybrid, or remote as appropriate	P-5 in person suggested, or hybrid or remote as appropriate. Middle school in-person, hybrid, or remote suggested, High school hybrid or remote suggested	In-person suggested, hybrid, or remote as appropriate
Higher Education	In-person	In-person	In-person suggested, hybrid, or remote as appropriate	In-person suggested, hybrid, or remote as appropriate	Remote suggested, limited in-person when necessary	Remote suggested, very limited in-person when necessary
Places of Worship and Life Rites - Indoor unseated functions	50% / 500	50% / 175 People	50% / 50 no calculator or up to 100 with calculator	25% / 50 with calculator	25% / 50 with calculator	Remote, virtual service, or outdoor are strongly encouraged; indoors up to 10
Places of Worship and Life Rites - Indoor seated functions	50% / 500	50% / 175 Person Cap	50% / 100 Person Cap	25% / 50 Person Cap	25% / 50 Person Cap	Remote, virtual service, or outdoor are strongly encouraged; indoors up to 10
Places of Worship and Life Rites - Outdoor	6ft between parties outdoors, per local zoning					
Restaurants	50% / 500	50% / 175 indoors	50% / 50 indoors (or up to 100 with calculator)	25% / 50 indoors	Indoor dining closed. Take out, curbside, delivery, or to-go - outdoor/open air with only groups of own household	Indoor and outdoor dining is closed. Take out, delivery, or to-go is open
Last Call	Per local guidance	Midnight (on-premise)	11pm (on-premise)	10pm (on-premise)	8pm (on-premise)	NO on-premise service
	LEVEL GREEN: PROTECT YOUR NEIGHBORS	LEVEL BLUE: CAUTION	LEVEL YELLOW: CONCERN	LEVEL ORANGE: HIGH RISK	LEVEL RED: SEVERE RISK	LEVEL PURPLE: EXTREME RISK
Non-critical Manufacturing	50% / 500	50% / 175	50% / 50 (or up to 100 with calculator)	25% / 50	25% / 50	10% / 25
Offices	50%	50%	50%. Remote work is strongly encouraged	25%. Remote work is strongly encouraged	10%. Remote work is strongly encouraged	Remote work or closed
Bars	50% / 500	CLOSED	CLOSED	CLOSED	CLOSED	CLOSED
Gyms / Fitness	50% / 500	25% / 75	25% / 50	25%, 25 indoors, or outdoors in groups less than 10	10%, 10 indoors per room, or outdoors in groups less than 10. Reservations required	Virtual, or outdoors in groups less than 10
Group Sports and Camps	50% / 500	50 person cap per activity	25 person cap per activity	Virtual, or outdoors in groups less than 10	Virtual, or outdoors in groups less than 10	Virtual, or outdoors in groups less than 10
Critical and non-critical retail	50%	50%	50%	50% with increased curbside pick up, and delivery. Dedicated senior and at-risk hours encouraged.	50% with increased curbside pick up, and delivery. Dedicated senior and at-risk hours encouraged.	Curbside, pick-up, and delivery
Personal Services	50% / 500	50% / 50	50% / 50	25% / 25	25% / 25	Closed
Limited Health care settings	50% / 500	50% / 50	50% / 50	25% / 25	25% / 25	10% / 25
Indoor unseated events	50% / 500	50% / 175 person cap	50%, 50 no calculator, (or up to 100 with calculator)	25%, 50 no calculator, (with calculator)	CLOSED	CLOSED
Indoor seated events	50% / 500	50% / 175 person cap	50%, 100 person cap (6ft distancing between parties)	25%, 50 person cap (6ft distancing between parties)	CLOSED	CLOSED
Outdoor unseated events	50% / 500	50% / 250 person cap	50% / 175 person cap (with calculator)	25% / 75 person cap (with calculator)	25%, 75 people (with calculator), attended only with members of your own household and 6ft spacing between groups	CLOSED
Outdoor seated events	50% / 500	50% / 250 person cap	50%, 175 person cap (6ft distancing between parties)	25%, 75 person cap (6ft distancing between parties)	25%, 75 people (6ft distancing between parties), attended only with members of your own household and 6ft spacing between groups	CLOSED
Outdoor guided events	50% / 500	50% / 25	50% / 10	25% / 10	25% / 10	25%, up to 10 only in your own household

Figure 2. COLORADO'S VACCINE PLAN (12/18/20)*



**According to the Pueblo Department of Public Health and Environment Executive Director, Randy Evetts, and the Pueblo County Sheriff's Office Emergency Services Bureau Captain, Paul J. Toth, Phase 1 will continue through March 2021 and beyond. Phase 2 vaccinations may begin as early as April or May 2021, and Phase 3 is scheduled to begin June 2021 and likely continue through August and beyond. These estimated distribution windows may vary based on the FDA's approval of new vaccines, the availability or scarcity of vaccine supplies, and on ability to continue to follow all COVID-19 safety protocols during the early stages of vaccinations in order to avoid unnecessary strain on community resources, including hospitals, public health, and emergency services.*