

Appendix E

AESTHETIC GUIDELINES AND CONSTRUCTION STANDARDS

EXHIBIT A

Colorado State University - Pueblo

DESIGN GUIDELINES



JANUARY 2006

RNL

Colorado
State
University
PUEBLO

Introduction

DESIGN
GUIDELINE
PURPOSE

HISTORICAL
CONCEPTS



HISTORICAL CONCEPTS

The original 1963 campus master plan outlined general principles and concepts to be maintained:

"Wall Architecture" or sculptured building enclosure on the mesa to be seen from the whole City of Pueblo and I-25

Articulation and mass with impressions of light and shadow and large enough to "really count from the City"

Linear campus master plan, called the "paseo," with buildings on both sides creating an edge that defines the pedestrian ways

The first buildings, the Library and Science Building, placed in a row along the cliff and close together to make a statement

All buildings to be constructed with poured-in-place concrete, long span pre-cast beams, and pre-cast exterior walls

DESIGN GUIDELINE PURPOSE

Provide the unification of campus character through the scale and relationships between architecture and open space and use of common architectural and site elements

Maintain the historical campus character by guiding new development

Develop the core area of campus through common elements and focal points with a centrally located pedestrian oriented campus and vehicle circulation to the exterior

Organize land uses to define a logical and clear campus

CAMPUS AND SURROUNDING AREA

Background

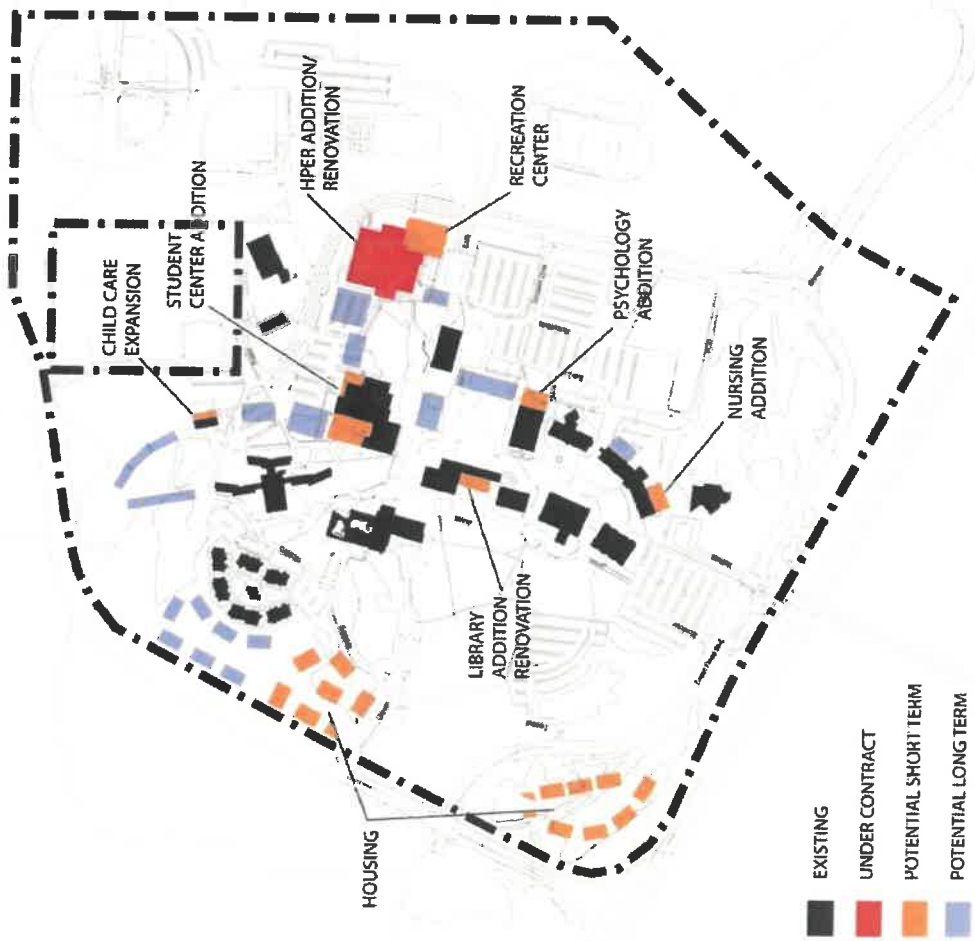


Background



POTENTIAL DEVELOPMENT

Background



CIRCULATION

Background



GREEN SPACE

Background



POTENTIAL
CAMPUS

Background



BUILDING

Defining Character

APPROPRIATE: *External views to the mountains and plains*

Internal views to focal points and pedestrian paths

Strong building edge along internal pedestrian mall and quadrangles, with buildings defining path or edge

NOT

APPROPRIATE: *Arbitrarily located buildings*

Blocked view angles

SETBACKS AND ORIENTATION

APPROPRIATE: *Mass is central, defining core of campus and creating edge to open spaces*

Mass and height to frame view angles

Separation of building mass into linear elements for structures of three to five stories

NOT

APPROPRIATE: *High buildings at edges of campus boundaries*

Buildings over five stories

MASSING AND HEIGHTS



BUILDING

Defining Character

APPROPRIATE: *Flat roofs*

Square and rectilinear or elongated shapes

Vertical and horizontal surfaces

NOT

APPROPRIATE: *Sloped, angled, or pitched roofs*

Curves or acute angles, vertical or horizontal

FORMS

APPROPRIATE: *Symmetry and repetitious patterns*

Distinctive horizontal lines

Horizontal ribbon windows, vertical punched openings

Vertical and horizontal alignment of openings in elevations

NOT

APPROPRIATE: *Random and various sized openings*



ELEVATION FACADES

Defining Character

APPROPRIATE: *Exposed aggregate concrete panels or similar material, color, size and finish, to match Library*

Bronze and aluminum glazed systems with exposed and built-glazed panels

Exposed architecturally finished concrete

Stucco soffits



NOT APPROPRIATE: *Metal siding*

Painted trim or wood finishes

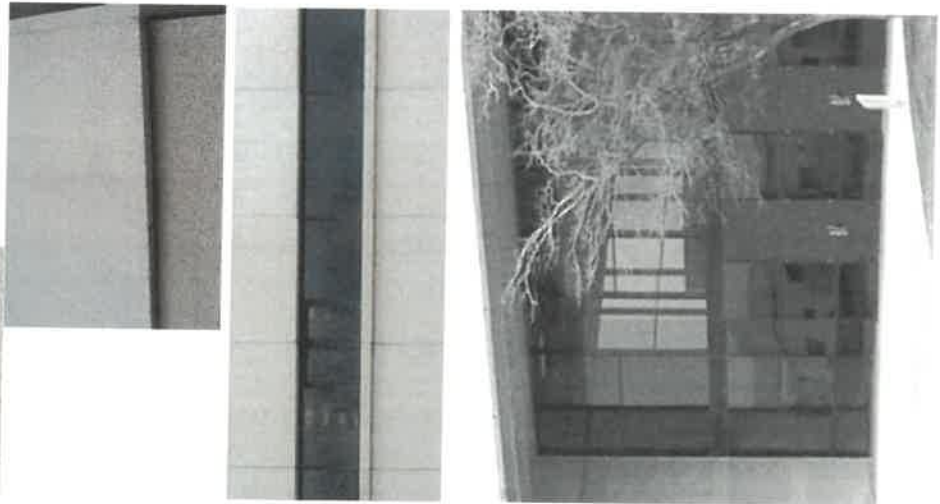
Stucco, plaster, or similar synthetic systems, as a finish coating

Stone panels

Masonry, brick, or concrete block

Shingle, stone, wood, or metal roofs

Glass block



Defining Character

APPROPRIATE: Layered concrete panels

Horizontal linear windows, glass panels aligned with concrete panels

Minimal trim

Exposed concrete structural systems

Punched openings or protruding openings

Building overhangs

Notched panels at fenestration or layered panels



NOT

APPROPRIATE: Awnings, sunscreens

Recessed windows

Exposed steel structures

Detailed trim work

Round or angled openings and details

ARCHITECTURAL DETAILS

BUILDING

Defining Character

APPROPRIATE: *Font, size, height, and material to match existing signage on buildings*

NOT APPROPRIATE: *Panel signs
Backlit or acrylic letters*

BUILDING SIGNAGE



APPROPRIATE: *Mechanical, electrical, plumbing, and security systems to be integrated into building architecture, fully louvered and concealed*

Trash loading and service areas located away from central campus/major pedestrian ways and screened from pedestrian walks

NOT APPROPRIATE: *Exposed utility equipment components*

BUILDING UTILITIES



Defining Character

SITE

APPROPRIATE: Sod within green space, open space, and quadrangles.

Feature landscape of sculptural or organic forms at entries, open seating areas, nodes, and focal points

Natural landscape/xeriscape outside of Green Space boundaries

Landscaping in all land surfaces disturbed by construction, temporary storage, loading, etc.

Donor trees grouped in non-interrupted open spaces

NOT APPROPRIATE: Xeriscape/arid plantings within primary pedestrian ways, internal to the campus



SITE

Defining Character



- APPROPRIATE:** Red brick pavers at major pedestrian ways, focal points, central to the campus, replaced over time as appropriate
- Flat concrete/smooth finish at primary and secondary pedestrian ways, borders, accents, vertical transitions
- Handicap accessible paths
- Special paving at building entry or focal points
- NOT APPROPRIATE:** Exposed aggregate, asphalt, cobblestone, stamped concrete, or unpaved pedestrian walkways

HARDSCAPE MATERIALS



- APPROPRIATE:** Features located at focal points, materials to complement existing building materials
- NOT APPROPRIATE:** Any new exposed irrigation channels

WATER FEATURES

SITE

Defining Character

APPROPRIATE: Pedestrian lighting standard within pedestrian paths to be 12' maximum height, dark bronze box and pole

Bollard or landscaping island at focal points

Parking lot lighting to meet campus standards



NOT APPROPRIATE: Light poles over 12' within primary pedestrian ways, focal points and quadrangles

Spotlights

High maintenance with breakable components



LIGHTING

APPROPRIATE: Meeting campus standard, size, color, text, and location as described in the Innerface document dated February 18, 2003 and revised March 23, 2003



Side B

Discrete donor plaques, located per campus approvals

NOT APPROPRIATE: Backlit signage



Sign Type A

SITE SIGNAGE

SITE

Defining Character

APPROPRIATE: Art is an important element on campus, and is encouraged

Scale, color, and size shall be appropriate in its context

Entryway art that is related to the building is encouraged

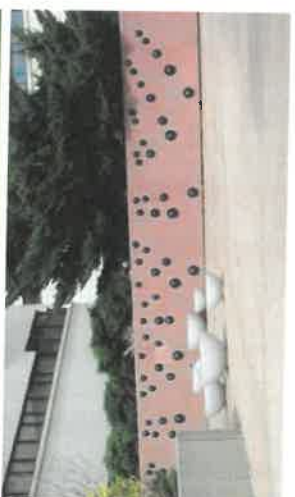
Sculptural pieces shall be safe and secure, with no sharp edges, obvious climbing sculptures, or unsafe heights

Bases of sculptural pieces should have architectural quality, such as flush to the ground

Color shall be used as a focal point in all entry artwork

NOT APPROPRIATE: High maintenance

Not compatible due to scale, color, size, safety, or topic



ART SELECTION

SITE

Defining Character

APPROPRIATE: *Consistent imagery in furnishings including seating, bike racks, railings, handrails, trash receptacles, and kiosks*

Smooth finish concrete or Kynar painted

Appropriate colors for painted metal furnishings include dark brown, black, or midnight blue

Simple site and retaining walls and planters complementing building materials, such as concrete, glass, and ground-face block with similar colored exposed aggregate as on buildings

Benches to consist of materials complementing existing building materials

Seating, benches and table seating located in groupings on hardscape surfaces

NOT APPROPRIATE: *Wood or stone benches*

Wrought iron or steel fencing

SITE FURNISHINGS

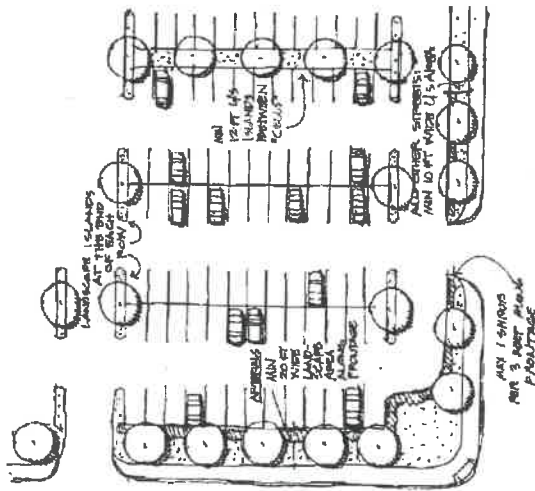


SITE

Defining Character

- APPROPRIATE:** Landscape parking areas to reduce apparent size, prevent long rows of cars and provide shade
- Define pedestrian ways with appropriate landscape and hardscape sidewalks and crossings
- Provide secondary links to primary pedestrian ways
- Maintain minimum stall space at 9'x18', with 2' overhang, or 20' long
- Provide 2% of spaces for the handicapped
- Identify student and staff parking zoning with color markings and signage
- Berm or landscape parking lot edges to 4' above parking surface, preventing direct light to oncoming pedestrians or adjacent buildings
- Landscape a minimum of 5% of paved lot surface with a minimum of one deciduous tree per 300 SF of required landscape
- Provide a planted island at the end of each parking row, a minimum of 8' wide and at least one island for each 12 consecutive spaces
- Light parking areas with campus standard fixtures and meet a minimum of 4 footcandles evenly
- Asphalt paved parking surfaces

- NOT APPROPRIATE:** Parking at gateways/entries to campus
- Lots within primary pedestrian ways
- Parking within green zones, open space, or quadrangles
- Unpaved parking surfaces



PARKING AREAS

SITE

Defining Character

APPROPRIATE: Located away from main pedestrian ways

Screened

Color to blend with surroundings

NOT

APPROPRIATE: Exposed utilities along primary pedestrian ways, fields, green quadrangles

UTILITIES

APPROPRIATE: Slope minimum of 1/4" per foot at a minimum of 4' from building footprint

Provide hard surface (i.e., concrete) a minimum of 4' from building and surface drain if required

Provide underground foundation drainage systems

Irrigation channels are encouraged only as underground at new facilities

NOT

APPROPRIATE: Landscape adjacent to building
Open irrigation channels at new facilities

SOIL CONSIDERATIONS

